

Xorel Everest Signature

6035

\$57.00 /yd.

Minimum for listed color/s - 50 yards

Custom Color - 250 yards

Upholstered Walls/Panels Specifications

Type: Moveable Walls (backing requirements vary by manufacturer)

Backing: Unbacked

Backing Note(s): Acrylic: This backing provides a coating to enhance adhesion and prevent bleed through of adhesives (15 yard minimum), Heavy Acrylic: This backing provides a coating to enhance adhesion and prevent bleed through of adhesives and is preferred for heavier duty installs such as moveable wall systems (15 yard minimum), Unbacked: Acoustically transparent, highly tackable, ability to self heal, yarns can "move back" into position. Highly stable on panels and does not react to changes in humidity or moisture.

Finish(es): Finish-Free

Width: 56" (142 cm)

Repeat: 40" (102 cm) Length x 56" (142 cm) Width

No match required

Weight per Linear Yard: 13 oz

Contents: 100% IFR Xorel®

Cleaning Code: WS & BC - Water/Solvent & Bleach Cleanable

Flammability: ASTM E84 Class A / Class 1, Canadian ULC S102, NFPA 265 Room Corner Test

Manufactured In: EU

Warranty: 10 years

ACT Symbols: 

Copyright: © 2018 Carnegie Fabrics

Programs/Partnerships

Program Guidelines: GSA

Sustainability

Standards and Certifications: Cradle to Cradle Certified Silver, LEED, MindClick Rated - Leader, Mindful Materials, SCS Indoor Advantage™ Gold

Program Inclusions/Approvals: Mindful Materials

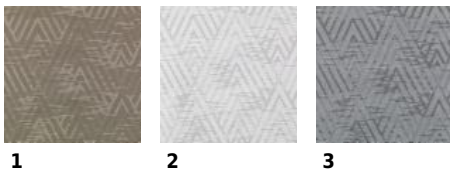
Free of: Antimicrobials, Bisphenol A (BPA), Chlorine, DMF, Fluorocarbons, Formaldehyde, Heavy metals, Ozone-depleting chemicals, PFC, Phthalates, Plasticizers, PVC, Solvents, Stain resistant finishes

Additional Details: Extremely low VOCs, Inherently Antimicrobial - In accordance with Test Method AATCC 147, No topical finishes, Responsible Return Program, Safely Disposable

Customize

All Signature designs are made-to-order. They can be ordered in the colors above or custom colored for a 50-yard minimum. [Click here to get started.](#)

Colors



1

2

3