

Xorel Ellipse Embroider

6105

\$98.00 /yd.

A \$3.00 per yard cut charge applies to orders under 50 yards

Upholstered Walls/Panels Specifications

Type: Acoustical, Tackable, Wrapped Panels, Xorel Artform

Backing: Unbacked

Backing Note(s): Acrylic: This backing provides a coating to enhance adhesion and prevent bleed through of adhesives (15 yard minimum), Heavy Acrylic: This backing provides a coating to enhance adhesion and prevent bleed through of adhesives and is preferred for heavier duty installs such as moveable wall systems (15 yard minimum), Unbacked: Acoustically transparent, highly tackable, ability to self heal, yarns can "move back" into position. Highly stable on panels and does not react to changes in humidity or moisture.

Available Backing(s): Acrylic, Heavy Acrylic, Unbacked, X-Protect™ Sit, X-Protect™ Wall

Finish(es): Finish-Free

Width: 56" (142 cm)

Repeat: 14.56" (37 cm) Length x 17.52" (45 cm) Width

Weight per Linear Yard: 17 oz

Contents: 100% IFR Xorel®

Cleaning Code: WS & BC - Water/Solvent & Bleach Cleanable

Flammability: ASTM E84 Class A / Class 1, Canadian ULC S102, FAA 25.853 (a&b), Fabric meets Underwriters Laboratories (UL) 1286 Flammability Requirements for Office Furnishings, NFPA 265 Room Corner Test, NYC 294-40 SR

Acoustics: NRC of 0.9 when wrapped around a 2" thick panel, Test Method ASTM C 423

Manufactured In: EU

Warranty: 10 years

ACT Symbols: 

Copyright: © 2020 Carnegie Fabrics

Sustainability

Standards and Certifications: Cradle to Cradle Certified Silver, LEED, MindClick Rated - Leader, Mindful Materials, SCS Indoor Advantage™ Gold

Free of: Antimicrobials, Bisphenol A (BPA), Chlorine, DMF, Fluorocarbons, Formaldehyde, Heavy metals, Ozone-depleting chemicals, PFC, Phthalates, Plasticizers, PVC, Solvents, Stain resistant finishes

Additional Details: Extremely low VOCs, Inherently Antimicrobial - In accordance with Test Method AATCC 147, No topical finishes, Responsible Return Program, Safely Disposable

Customize

260 yards

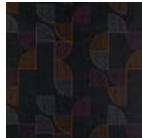
Colors



20



21



22