



## Xorel Sleet Embroider

6299S Carnegie Xorel<sup>®</sup> BIOBASED

\$110.00 /yd.

A \$3.00 per yard cut charge applies to orders under 50 yards  
Minimum order - 5 yards

Additional tariff may apply. Contact our [Client Experience](#) team for quotes.

## Specifications

**Backing:** X-Protect™ Sit

**Backing Note(s):** X-Protect Sit: A proprietary technology which prevents stains and moisture from passing through textile to the seat cushion.

**Finish(es):** Finish-Free

**Durability:** No wear 200,000 double rubs , Results above 100,000 double rubs have not been shown to be a reliable indicator of increased fabric lifespan

**Width:** 54" (137 cm)

**Repeat:** 76" (193 cm) Length x 54" (137 cm) Width  
No match required

**Weight per Linear Yard:** 12.6 oz

**Contents:** Colors 805, 809, 813, 817, 829: 100% Xorel® (85% Biobased PE, 15% PE), Color 615: 100% Xorel® (91% Biobased PE, 9% PE)

**Cleaning Code:** WS & BC - Water/Solvent & Bleach Cleanable

**Flammability:** California Technical Bulletin 117-2013

**Manufactured In:** EU

**Warranty:** 10 years

**ACT Symbols:** 



## Sustainability

**Standards and Certifications:** Cradle to Cradle Certified Gold, Cradle to Cradle Material Health Platinum Certification, Environmental Product Declaration (EPD), HHI (Healthier Hospitals Initiative), Kaiser Permanente, LEED, Living Product Certified, MindClick Rated - Leader, Mindful Materials, SCS Indoor Advantage™ Gold, TUV Austria OK biobased - Level 4 (ASTM D6866), USDA Certified Biobased Product

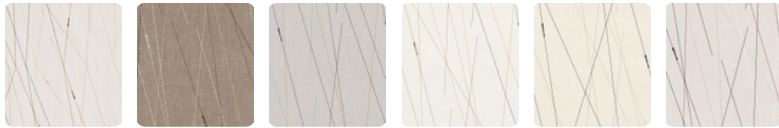
**Content:** 85% Biobased content derived from rapidly renewable plant based resources

**Free of:** Antimicrobials, Antimony, Bisphenol A (BPA), Chlorine, DMF, Fluorocarbons, Formaldehyde, Halogenated fire retardants, Heavy metals, Ozone-depleting chemicals, PFC, Phthalates, Plasticizers, PVC, Solvents, Stain resistant finishes

**Additional Details:** Extremely low VOCs, Inherently Antimicrobial - In accordance with Test Method AATCC 147, No topical finishes, Responsible Return Program, Safely Disposable

---

## Colors



615

805

809

813

817

820