

# INSTALLATION INSTRUCTIONS FOR ARCADE TPO

## EXAMINATION:

Examine goods to assure that pattern, color, quantity, and quality is as ordered. All wallcoverings must be examined for pattern, color and quality. Make sure that multiple rolls match each other. **DO NOT HANG MORE THAN THREE DROPS** without reviewing for quality and consistency.

## WALL PREPRATION:

Surfaces to be covered must be clean, sanded smooth, dry and structurally sound. Loose paint or other wallcovering must be removed.

Glossy surfaces should either be sanded to dull the surface or an application of Romans Professional **PRO-935(R-35)** Heavy Duty Primer should be made.

On new drywall, if future strippability is desired and no primer is specified, use a quality primer such as **PRO-977**. In situations where substrate is showing-through on lighter colors, a pigmented tinted primer can be used to give the wall a uniform color and prevent substrate transmission.

## ADHESIVE AND HANGING

Use Heavy Duty Clay (**PRO-774 or PRO-732**) based adhesive at full strength. Adhesive should not be thinned with water or chemical solvent.

**Before beginning hanging, examine pattern for color uniformity and any repeat in the design. Only full widths of material should be used for the most satisfactory installation.**

1. All material must be installed in roll numerical sequence within a shade lot, starting with the highest number first and going in decreasing order, with each strip in sequence as cut from the roll. Piecing or hanging headers with strips cut out of sequence can cause unsatisfactory shading
2. Overlapping and double-cutting, and pre-trimming the wallcovering both have advantages in making acceptable seams. Be careful not to "score" the drywall when double-cutting. **Tip:** A roller's width of paste can be added along the seam area, of the wall, to help seams remain tight.
3. Apply a generous even coat of adhesive to the fabric side of the material using a stiff bristle brush, a roller, or a pasting machine in accordance with manufacturer's label recommendations.
4. **AFTER THREE DROPS ARE INSTALLED, INSPECT THE WALLCOVERING** to ensure that the installer and designer are satisfied with the overall look.
5. The wallcovering should then be booked **15-20 minutes** prior to application to the wall.
6. Smooth the surface, working out air bubbles as you go using a stiff bristle brush or a plastic smoothing tool. **A steel broad knife should never be used to smooth the wallcovering.**
7. As each strip is installed, immediately remove excess adhesive from the wallcovering surface using a natural sponge and a soft bristle brush frequently rinsed in clean warm water. Dry with clean toweling. A professional paste cleaner should be used where adhesive has dried.
8. Vertical joints should not occur less than 6" from outside and inside corners.
9. **Do not install** wallcovering unless a temperature above 55o F is maintained in both areas of installation and storage.
10. Permanent building lights should be available for installation.

## INSTALLATION INSTRUCTIONS FOR ARCADE TPO

### ADDITIONAL BEST PRACTICES

**Hang first strip, when hanging the second strip, put strip against first at eye level. Always cut/match up in the white space between lines, never cut in the lines.** These pictures are lining up prior to hanging the strip.

Overlap approximately 1.5"-2" so cut can be made in white between colored lines after locating pattern repeat. Once established the strip can be hung and cut.

**The trick to this pattern is to always line up at eye level, match/cut in white, never try to match the lines.** That way if the lines begin to have some variation it will be very unnoticeable as it will be at very bottom or very top. **The installer must use some finesse when hanging this pattern!**

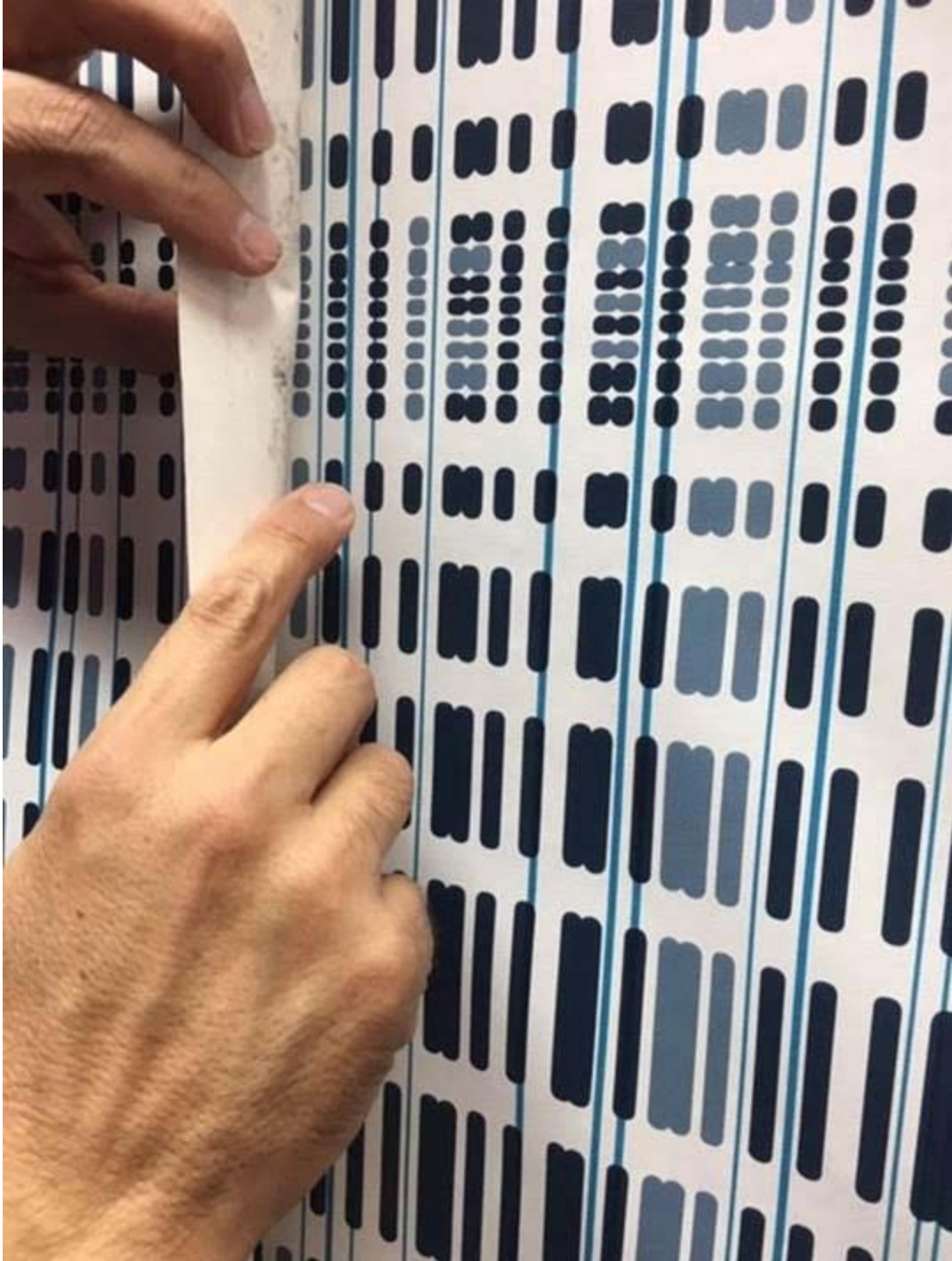


## INSTALLATION INSTRUCTIONS FOR ARCADE TPO

BEGIN TO FIGURE OUT LINE UP/MATCH ALWAYS CUT IN THE WHITE BACKGROUND



INSTALLATION INSTRUCTIONS FOR ARCADE TPO



**INSTALLATION INSTRUCTIONS FOR ARCADE TPO**



**INSTALLATION INSTRUCTIONS FOR ARCADE TPO**



INSTALLATION INSTRUCTIONS FOR ARCADE TPO



## INSTALLATION INSTRUCTIONS FOR ARCADE TPO

Small cuts made at top and bottom to assure line up is good prior to hanging/cutting. And, as you can see the pattern is lined up very well at top and bottom, variance at top may have been 1/16”.





INSTALLATION INSTRUCTIONS FOR ARCADE TPO



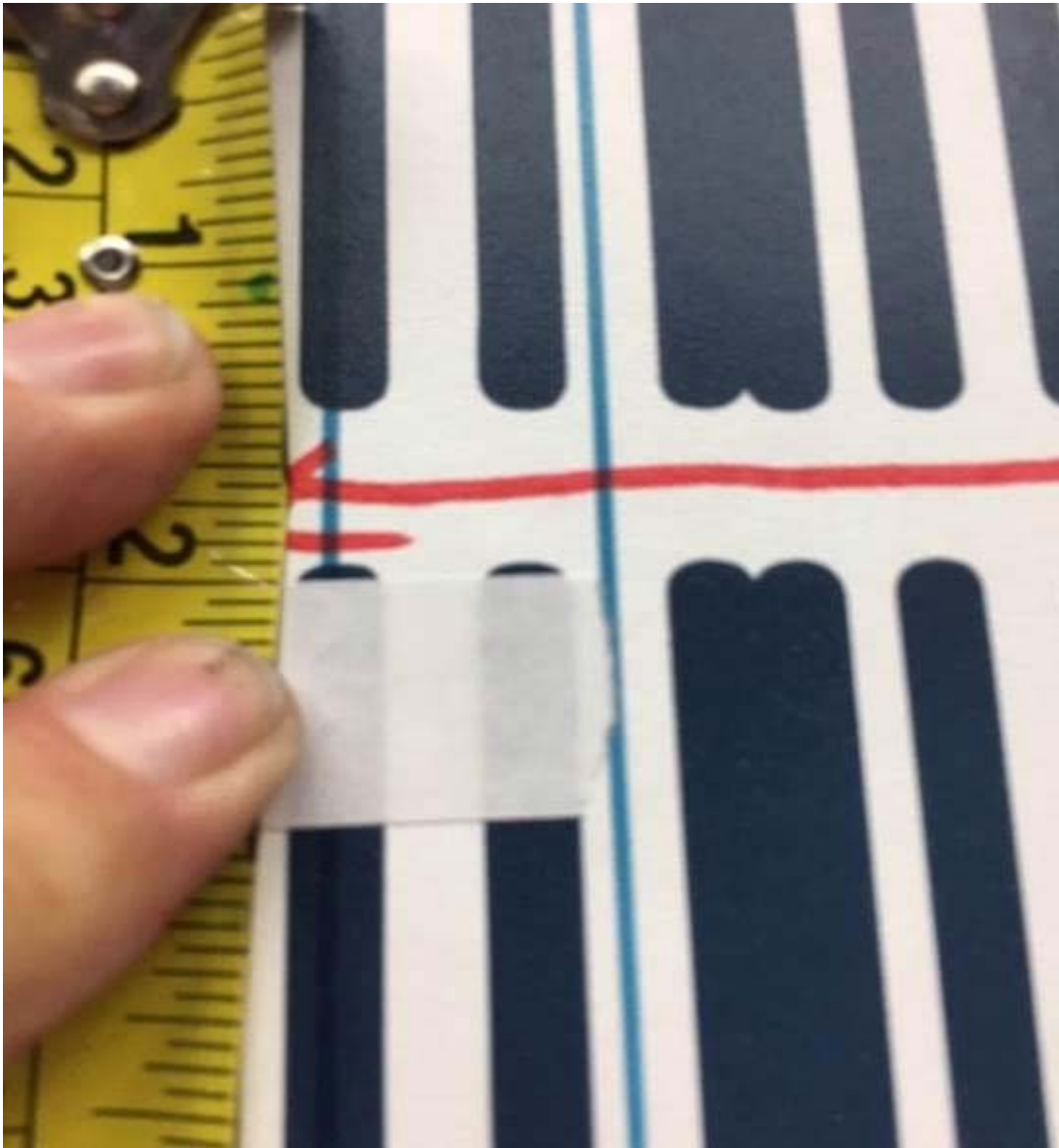
## INSTALLATION INSTRUCTIONS FOR ARCADE TPO

SEE TAPE TOWARDS THE TOP – BLUE LINE



## INSTALLATION INSTRUCTIONS FOR ARCADE TPO

THIS IS WHERE THE MATCH BEGINS TO MIGRATE A BIT BUT MUCH LESS THAN THE ALLOWED 1/8" TOLERANCE. **NOTICE THE CUT/MATCH IS IN THE MIDDLE OF THE WHITE**



**INSTALLATION INSTRUCTIONS FOR ARCADE TPO**



INSTALLATION INSTRUCTIONS FOR ARCADE TPO

