



Carnegie Space

BOOST

PRODUCT CUT SHEET

CARNEGIE BOOST

Boost Ottoman is a completely unique form that was developed to show off the versatility of Carnegie's Xorel Knit fabric. The result is a playful and colorful multi-layered ottoman with innumerable design options.

All commercial interiors are demanding on furniture. Boost was created to be durable and stylish in any space where people gather, create, and collaborate.



Education



Workplace



Healthcare



SPECIFICATIONS

Boost Ottoman | 21000

Use: Indoor Seating

Dimensions: Height 18.5" | Top Diameter 19.5" | Base Diameter 26.25"

Weight: 27.85 lbs

Frame: CPC Arauco Radiata Pine Plywood

Cushioning Material: CertiPUR-US® Foam

Available Backings: X-Protect™ Sit

Warranty: 3 years

COLORS:



Color 10



Color 20



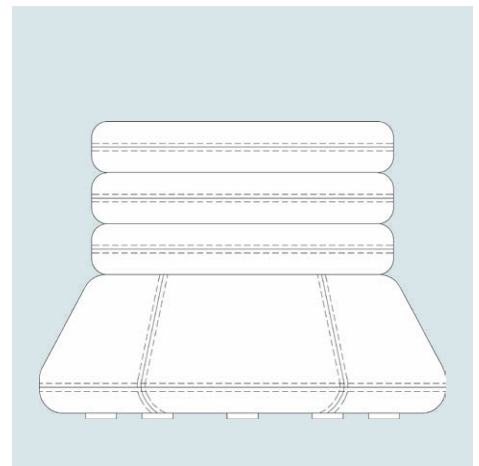
Color 30



Color 40



Color 50



Create Your Own with Xorel Knit

SPECIFICATIONS

Xorel Knit

With visual depth, dimension and a low lustre, Xorel Knit has an ambiance all on its own. The hand is crisp which speaks to its strength while the inherent flexibility provides the stretch and recovery requirements that many modern furniture pieces demand.

Material: 100% IFR Xorel®

Width: 72" (183 cm)

Durability: No wear 250,000 double-rubs

Cleaning Code: WS & BC

Available Backings: X-Protect™ Sit

Flame Retardancy: California Technical Bulletin 117 - 2013
NFPA 260 Class 1

ECO Info: Cradle to Cradle Certified Silver

facts Certified Silver

SCS Indoor Advantage Gold

Free of PVC, chlorine, plasticizers, heavy metals,
ozone depleting chemicals

No topical finishes

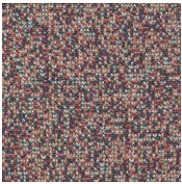
Extremely low VOCs, antimicrobial, safely disposable

Responsible Return Program

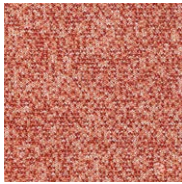
ACT Symbols:



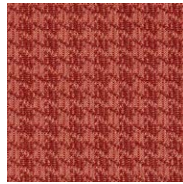
Xorel Knit Textile Options



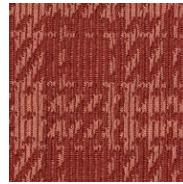
[Snap Knit 6019-5](#)



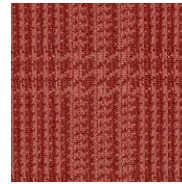
[Snap Knit 6019-4](#)



[Swerve Knit 6021-25](#)



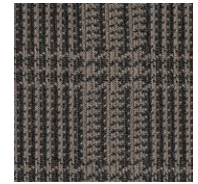
[Zoom Knit 6025-42](#)



[Bungee Knit 6023-35](#)



[Swerve Knit 6021-22](#)



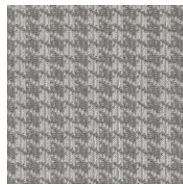
[Bungee Knit 6023-31](#)



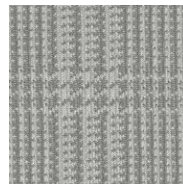
[Zoom Knit 6025-41](#)



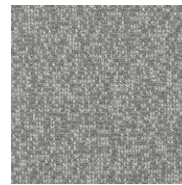
[Snap Knit 6019-3](#)



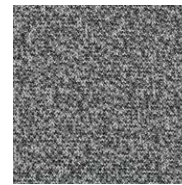
[Swerve Knit 6021-23](#)



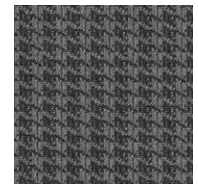
[Bungee Knit 6023-32](#)



[Snap Knit 6019-1](#)



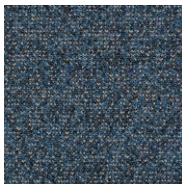
[Snap Knit 6019-2](#)



[Swerve Knit 6021-21](#)



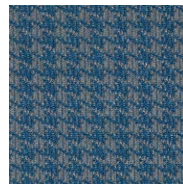
[Zoom Knit 6025-40](#)



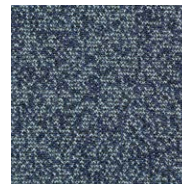
[Snap Knit 6019-10](#)



[Bungee Knit 6023-33](#)



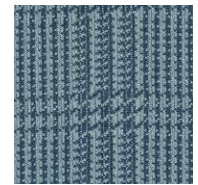
[Swerve Knit 6021-24](#)



[Snap Knit 6019-9](#)



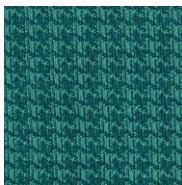
[Swerve Knit 6021-20](#)



[Bungee Knit 6023-30](#)



[Snap Knit 6019-7](#)



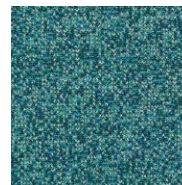
[Swerve Knit 6021-26](#)



[Bungee Knit 6023-34](#)



[Zoom Knit 6025-43](#)



[Snap Knit 6019-8](#)



[Snap Knit 6019-6](#)

COLOR DIAGRAMS:



Color 10



Color 20



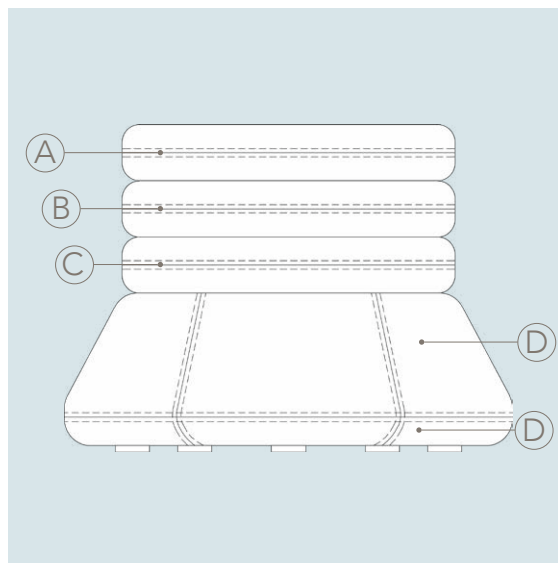
Color 30



Color 40



Color 50



Create Your Own with Xorel Knit

CARNEGIE BOOST

Featuring Siltech Press & Grain

For a wipeable and coated solution, Boost Ottoman is now available on 2 of our high performance coated upholstery fabrics: Siltech Press and Siltech Grain. Due to its limitless design possibilities, Boost Ottoman in Siltech can be customized to achieve a truly unique piece.

You can select up to 3 different colors to apply across sections A - D.



SPECIFICATIONS

Siltech Press | 6298



Subtle grained leather look

Siltech Grain | 6300



Medium grained leather look

Siltech coated upholsteries are 2nd generation silicone technology using 3 layers of silicone for increased strength and an improved natural hand. Siltech products deliver unmatched scratch and tear resistance along with incredible stain resistance and ease of cleaning all with no added finishes.

Material: Face: 100% Silicone
Back: 100% Polyester Double Knit

Width: 55" (140 cm)

Weight: 38.5 oz/linear yard

Durability: No wear 200,000 double-rubs

Cleaning Code: WS & BC

Flame Retardancy: California Technical Bulletin 117 - 2013
NFPA 260 Class 1
IMO 2010 FTP Part 8 for
Upholstery as Stocked
IMO Wheelmark
BS 5852 Crib 5

ECO Info: Free of PVC, chlorine, plasticizers, formaldehyde, heavy metals, antimony, Bisphenol A (BPA), ozone-depleting chemicals, fluorocarbons, halogenated fire retardants, and solvents
Low VOCs, Meets California Indoor Air Quality Specification CA 01350
California Proposition 65, RoHS & Reach compliant
Inherently flame resistant, antimicrobial and antibacterial
Press is certified as a Healthier Hospitals compliant product.
These products contain no formaldehyde or stain resistant finishes, are free from PVC and do not include antimicrobials or intentionally added flame retardants.

ACT Symbols: 

Continue onto next page to see Siltech Press and Siltech Grain colors.

Siltech Textile Options

									
Siltech Grain 6300-1	Siltech Press 6298-110	Siltech Press 6298-111	Siltech Press 6298-112	Siltech Grain 6300-20	Siltech Grain 6300-19	Siltech Press 6298-114	Siltech Grain 6300-2	Siltech Press 6298-113	Siltech Press 6298-115
									
Siltech Press 6298-131	Siltech Press 6298-136	Siltech Press 6298-116	Siltech Press 6298-118	Siltech Press 6298-117	Siltech Grain 6300-21	Siltech Press 6298-137	Siltech Press 6298-138	Siltech Press 6298-119	Siltech Grain 6300-22
									
Siltech Press 6298-165	Siltech Press 6298-130	Siltech Grain 6300-3	Siltech Press 6298-129	Siltech Press 6298-135	Siltech Press 6298-134	Siltech Grain 6300-25	Siltech Press 6298-120	Siltech Grain 6300-26	Siltech Press 6298-121
									
Siltech Press 6298-132	Siltech Press 6298-133	Siltech Grain 6300-10	Siltech Press 6298-158	Siltech Grain 6300-23	Siltech Grain 6300-24	Siltech Press 6298-140	Siltech Grain 6300-16	Siltech Press 6298-141	Siltech Press 6298-142
									
Siltech Press 6298-157	Siltech Press 6298-163	Siltech Press 6298-162	Siltech Press 6298-161	Siltech Press 6298-160	Siltech Press 6298-127	Siltech Press 6298-128	Siltech Grain 6300-4	Siltech Press 6298-159	Siltech Grain 6300-15
									
Siltech Press 6298-164	Siltech Press 6298-166	Siltech Grain 6300-9	Siltech Press 6298-167	Siltech Press 6298-170	Siltech Press 6298-168	Siltech Press 6298-169	Siltech Press 6298-126	Siltech Press 6298-125	Siltech Press 6298-122
									
Siltech Press 6298-173	Siltech Press 6298-172	Siltech Press 6298-171	Siltech Press 6298-174	Siltech Press 6298-176	Siltech Press 6298-175	Siltech Grain 6300-8	Siltech Press 6298-177	Siltech Press 6298-179	Siltech Grain 6300-7
									
Siltech Press 6298-181	Siltech Press 6298-182	Siltech Press 6298-180	Siltech Press 6298-143	Siltech Press 6298-144	Siltech Press 6298-123	Siltech Grain 6300-5	Siltech Grain 6300-6	Siltech Press 6298-124	Siltech Press 6298-178
									
Siltech Press 6298-183	Siltech Press 6298-151	Siltech Press 6298-150	Siltech Press 6298-147	Siltech Grain 6300-12	Siltech Press 6298-148	Siltech Grain 6300-13	Siltech Press 6298-146	Siltech Press 6298-145	Siltech Grain 6300-14
									
Siltech Press 6298-149	Siltech Press 6298-139	Siltech Grain 6300-17	Siltech Press 6298-152	Siltech Grain 6300-11	Siltech Grain 6300-18	Siltech Press 6298-153	Siltech Press 6298-156	Siltech Press 6298-155	Siltech Press 6298-154

Order a Sample

To order samples visit
our website or contact
samples@carnegiefabrics.com

Contact Us

Email
service@carnegiefabrics.com

Phone
1-800-727-6770

Find Your Rep
carnegiefabrics.com/us-sales

Design Ally Services
(Curated Samples)
carnegiefabrics.com/design-ally

Carnegie Headquarters

110 North Centre Avenue
Rockville Centre, NY 11570
T 1-516-678-6770
F 1-516-678-6875
service@carnegiefabrics.com

Carnegie Creative Studio
41 West 25th Street, 9th floor
New York, NY 10010
T 1-212-627-2060
F 1-212-627-2129
service@carnegiefabrics.com

Showrooms

New York City
41 West 25th Street, 8th floor
New York, NY 10010
T 1-212-627-2060
F 1-212-627-2129
nyshowroom@carnegiefabrics.com

Chicago
222 Merchandise Mart Plaza,
Ste. 10-112
Chicago, IL 60654
T 1-312-464-9376
F 1-312-464-9571
chicagoshowroom@carnegiefabrics.com

Carnegie is a PVC-free company.
For more information visit carnegiefabrics.com

© 2019 Carnegie Fabrics, LLC. Printed on recycled paper.