



# Xorel Vue

Architectural textiles to divide space

Carnegie



# Xorel Vue

Architectural textiles that bridge the gap between flat fabrics and rigid surfaces, the Vue collection offers a soft, tactile way to divide interior space. Made of Xorel, our durable, pvc-free material, the six crocheted and embroidered designs have an artisanal quality rarely seen in high-performance fabrics. Each plays with light and shadow, creating rich visual effects that add an element of surprise to a room. Used at the window or as a vertical partition, privacy panel or space divider; Vue is a warm and welcoming material that invites you to touch and interact.



**Xorel Vue  
Designs**

**Stack**

Metallic Xorel threads are crocheted to beguiling effect on a grid of interlocking loops.

Width 23.5 inches

**Lattice**

This intricate framework of finely embroidered lines plays with light and texture.

Width 48 inches

**Veil**

A modern take on lace, this embroidered design has a delicate appearance that belies its durability.

Width 48 inches



### Facade

The embroidered, building-like pattern features rectangular openings cut by hand.

Width 48 inches

### Passage

Inspired by metal screens, this design is produced by crocheting with two sizes of Xorel yarn.

Width 23.5 inches

### Meridian

This series of connected globes is achieved by embroidering Xorel onto a water-soluble base which is dissolved, leaving only the pattern.

Width 48 inches





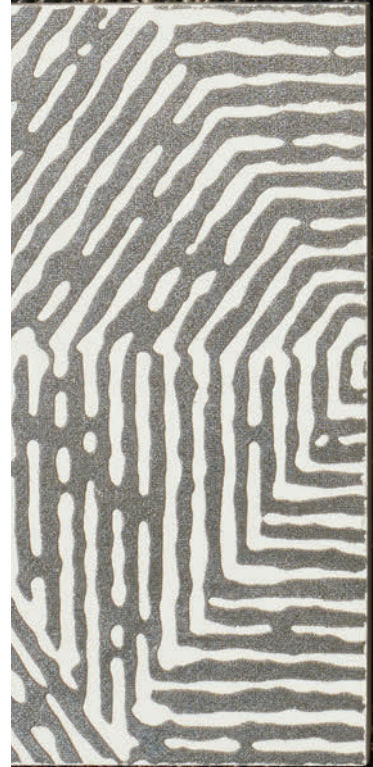
**A New Way of Seeing**

Installing Vue is simple, with a variety of options including Beam, our proprietary metal-and-wood partition system that attaches to the ceiling and holds panels taut.

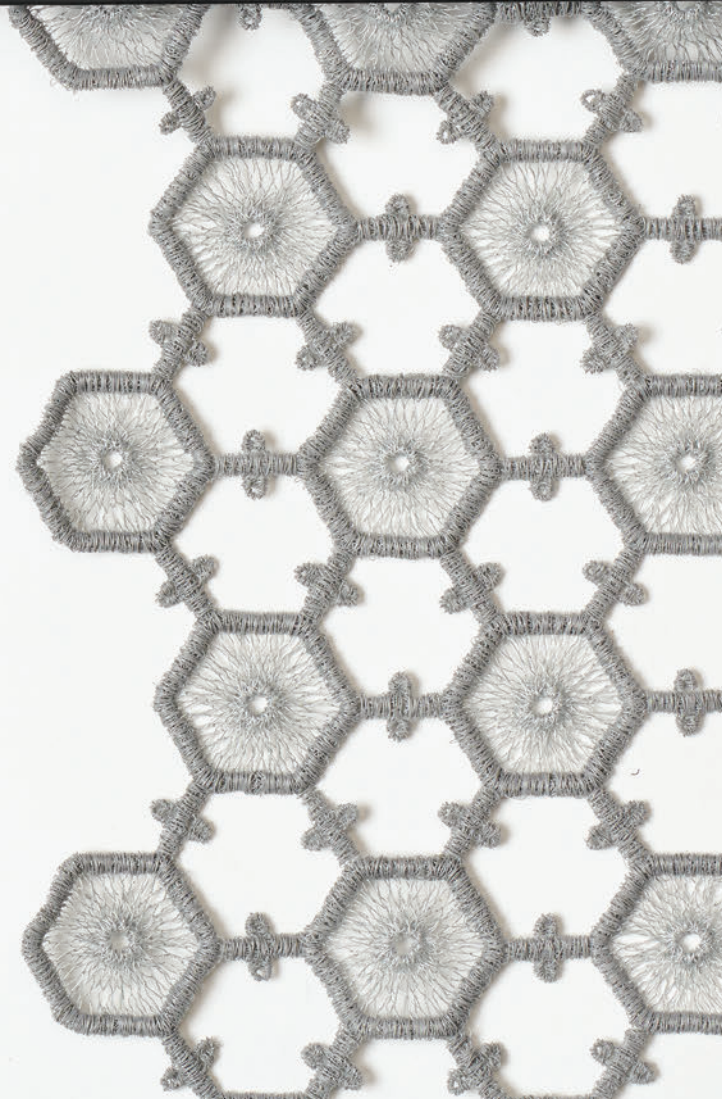
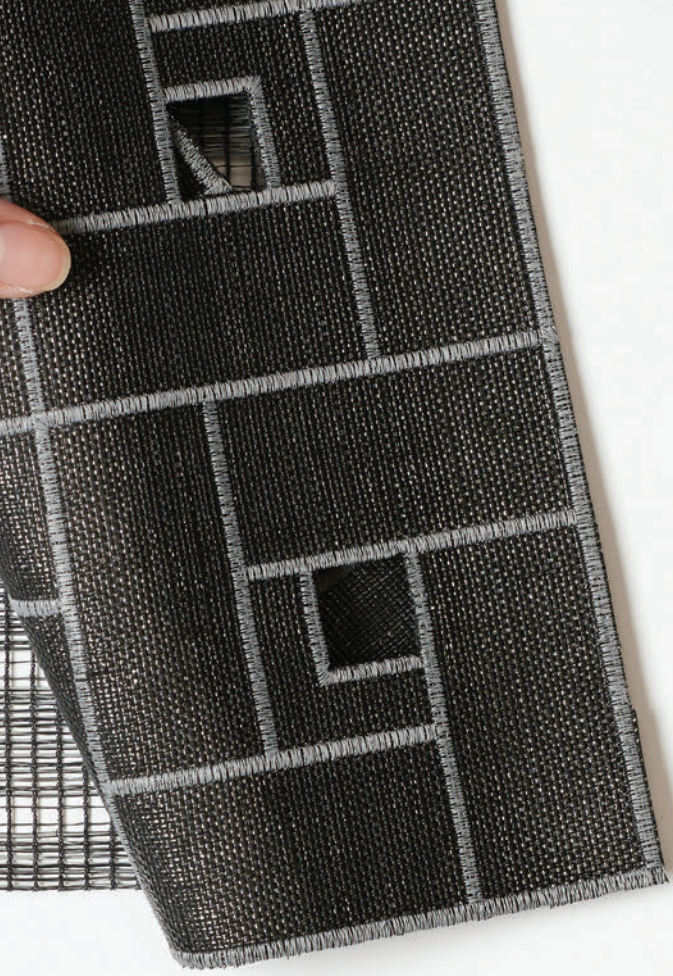
Textile: Passage 4758 Color 50  
Hardware: Carnegie Beam Light Oak, Brass

# A Tactile Way to Define and Enhance Interiors

Open-plan interiors challenge us to balance collaboration with personal space. Vue offers an opportunity to create both, with the collection's array of open to opaque weaves allowing for semi-private moments amid the room's greater flow. A softer alternative to rigid dividers, Vue provides an innovative way to introduce pattern, color, and texture—as well as a mix of materials—to any style of interior. The pieces also can be easily repositioned to accommodate an organization's changing needs.







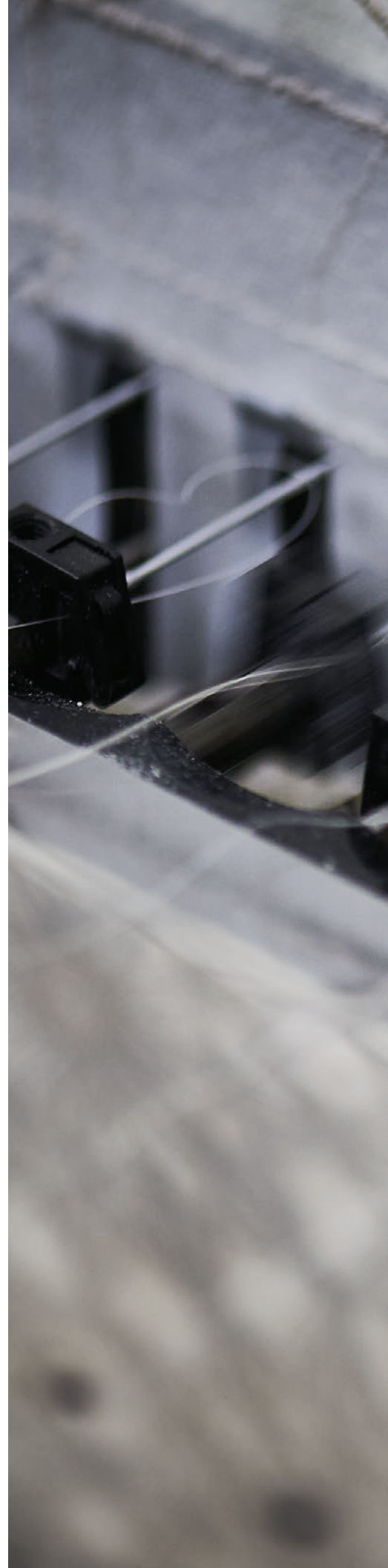


Textile: Meridian 4764 Color 12  
Hardware: Carnegie Beam Matte Black, Brass



# Innovation From the Very First Stitch

A milestone in material innovation, Vue is proof positive that timeless techniques can be utilized in modern textiles without compromising beauty or performance. Pursuing a passion for craft through the use of crochet and embroidery machines we have created a new architectural textile which blurs the line between art and commercial functionality.

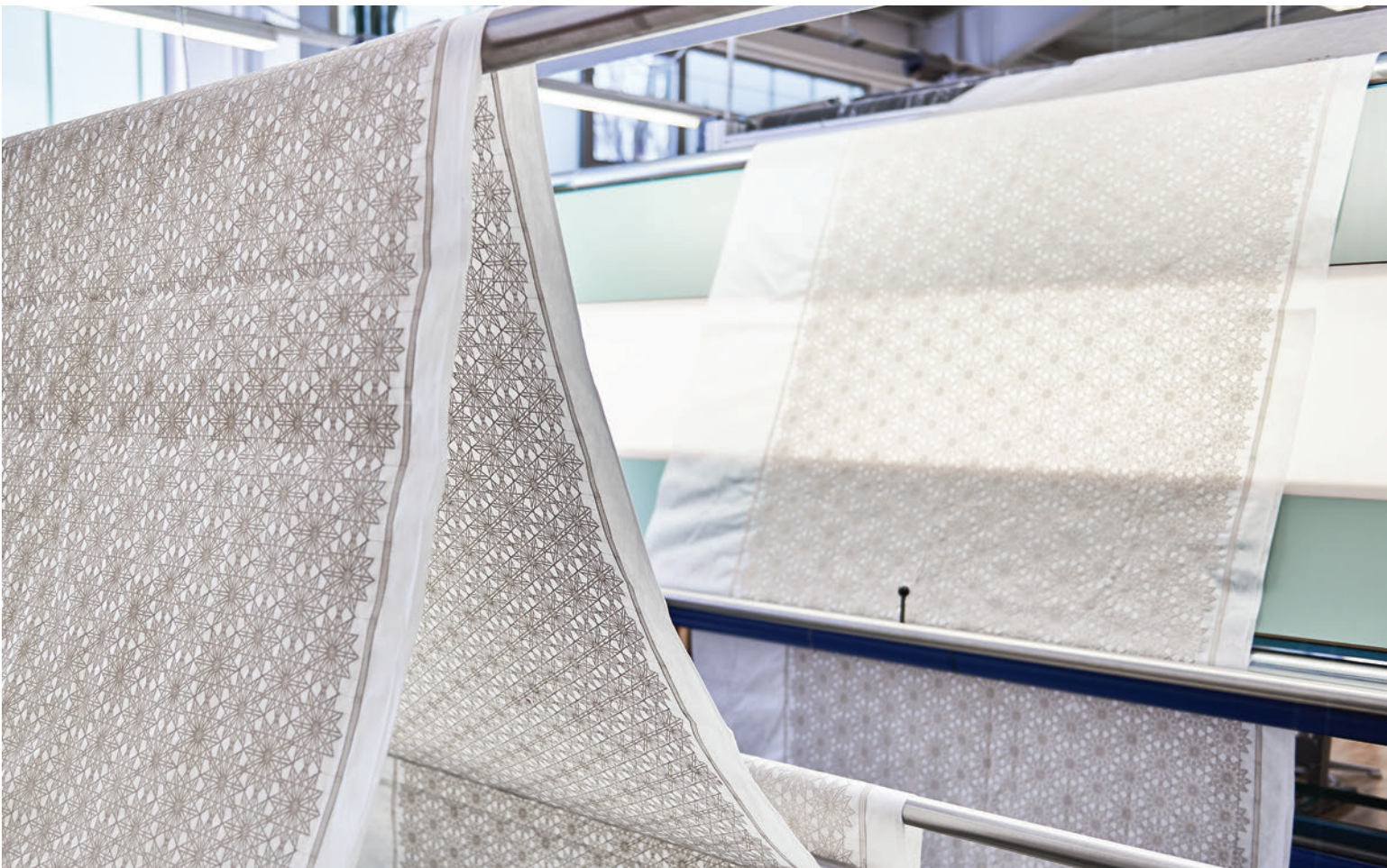








Though machine-loomed, the Vue textiles retain a weaver's touch, with sections of their manufacturing done by hand.

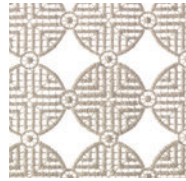


# Xorel Vue Textiles

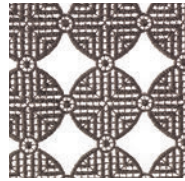
## Meridian 4764 Width 48 inches



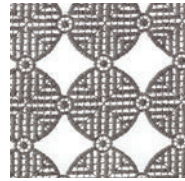
10



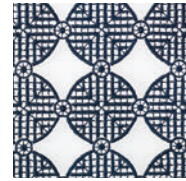
11



12



13

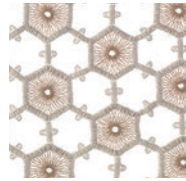


14

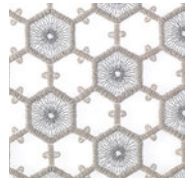
## Veil 4762 Width 48 inches



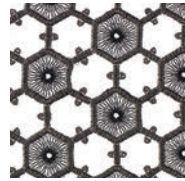
30



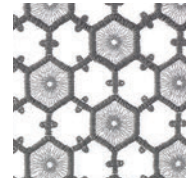
31



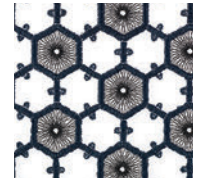
32



33

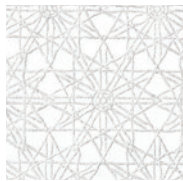


34



35

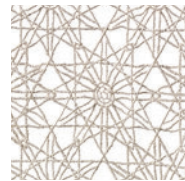
## Lattice 4760 Width 48 inches



20

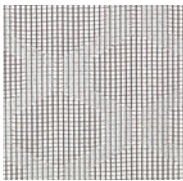


21

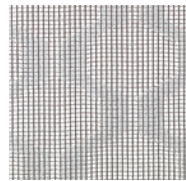


22

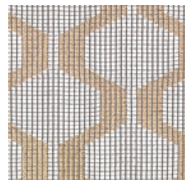
## Passage 4758 Width 23.5 inches



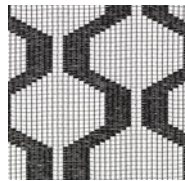
50



51

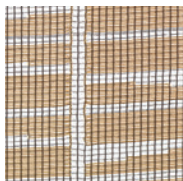


52

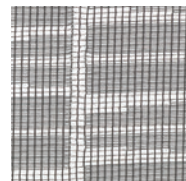


53

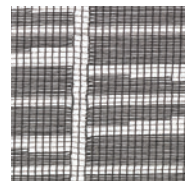
## Stack 4756 Width 23.5 inches



40



41



42

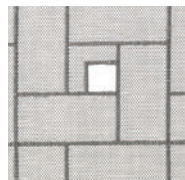
## Facade 4754 Width 48 inches



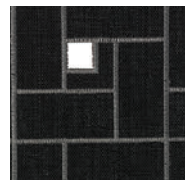
60



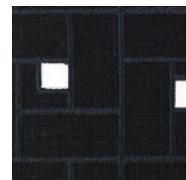
61



62

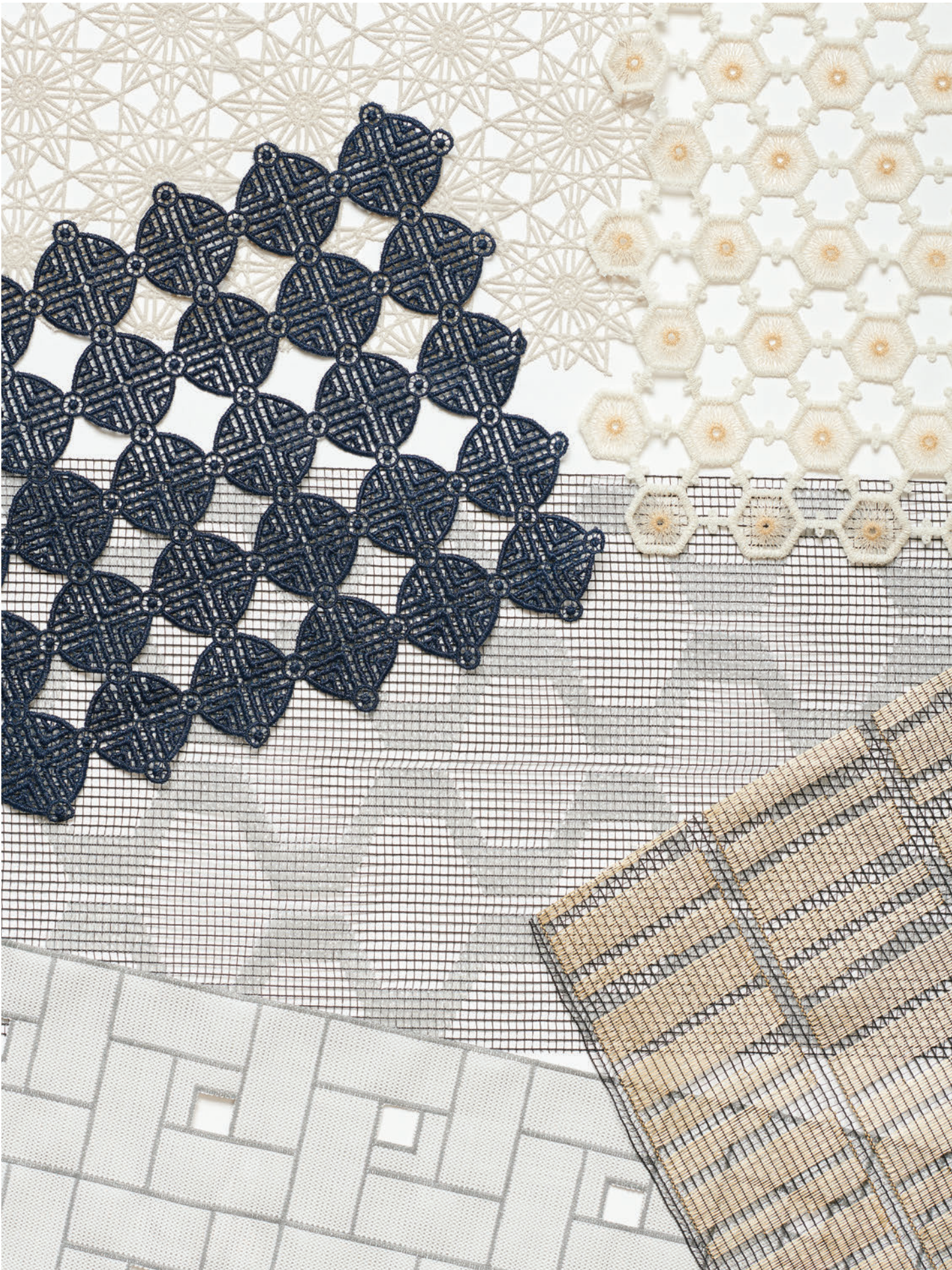


63



64





# | Carnegie Beam

Carnegie Beam is our revolutionary no-sew textile suspension system for elegantly dividing space. Combining the warmth of four wood options with four sleek metals, this hardware subtly attaches to the top and bottom of the fabrics panels. Using a simple magnetic system, the actual install requires virtually no tools or expertise.





## Carnegie Beam

Beautifully mixing high quality materials, Beam holds textiles up to 48" wide and 1/8" thick firmly in place. Metal rods affixed inside the wooden slats attach to the ceiling supporting heights up to 14 feet. A weighted bottom may also be used in lieu of the lower wood frame.



## Carnegie Beam Material Options

### Walnut Beam



White 31



Silver 32

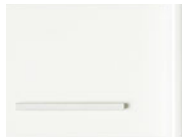


Bronze 33



Brass 34

### White Beam



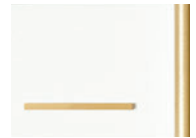
White 11



Silver 12



Bronze 13



Brass 14

### Light Oak Beam



White 21



Silver 22



Bronze 23

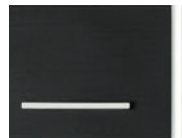


Brass 24

### Matte Black Beam



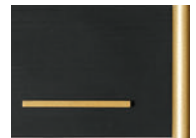
White 41



Silver 42



Bronze 43



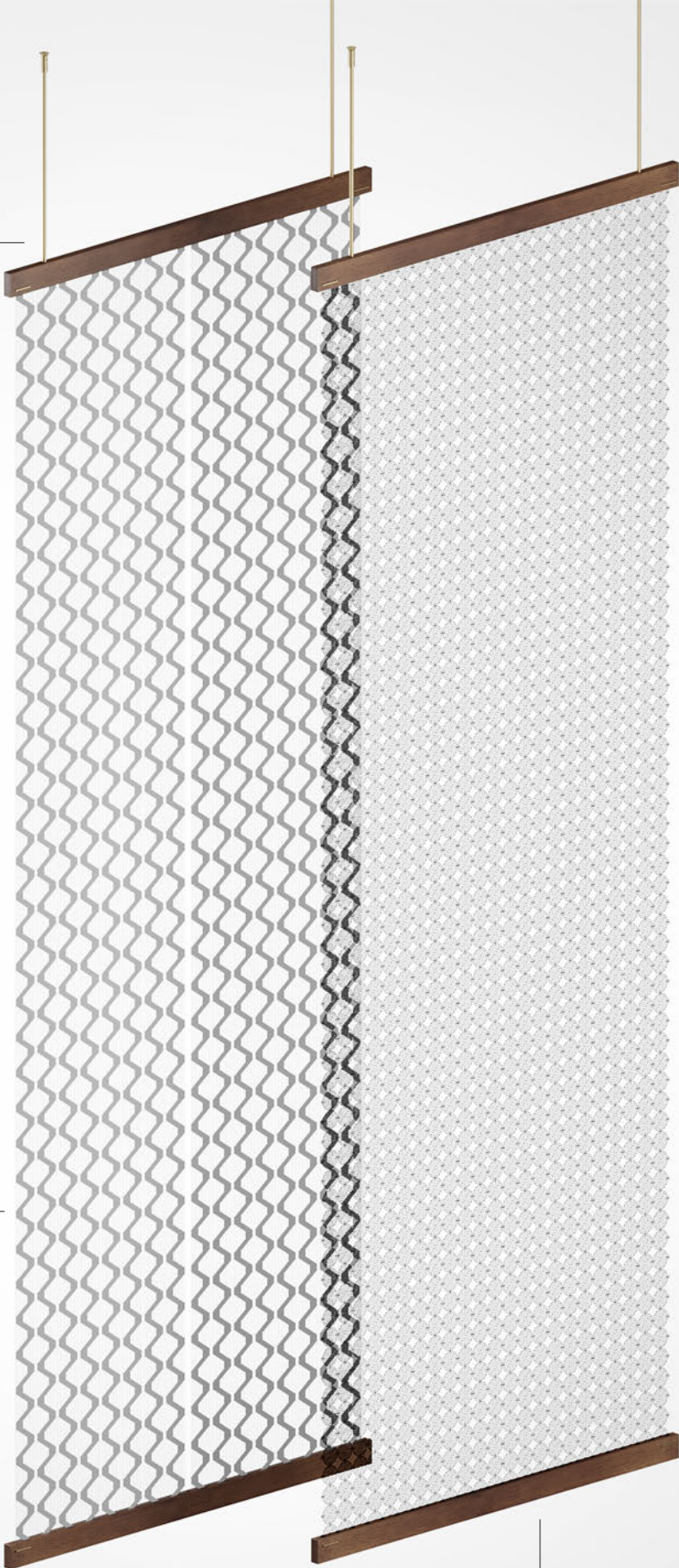
Brass 44

# Carnegie Beam Installation

Distance between suspended rods is 39"

Passage & Stack (23.5" wide) can double up with Beam

Beam width 48"

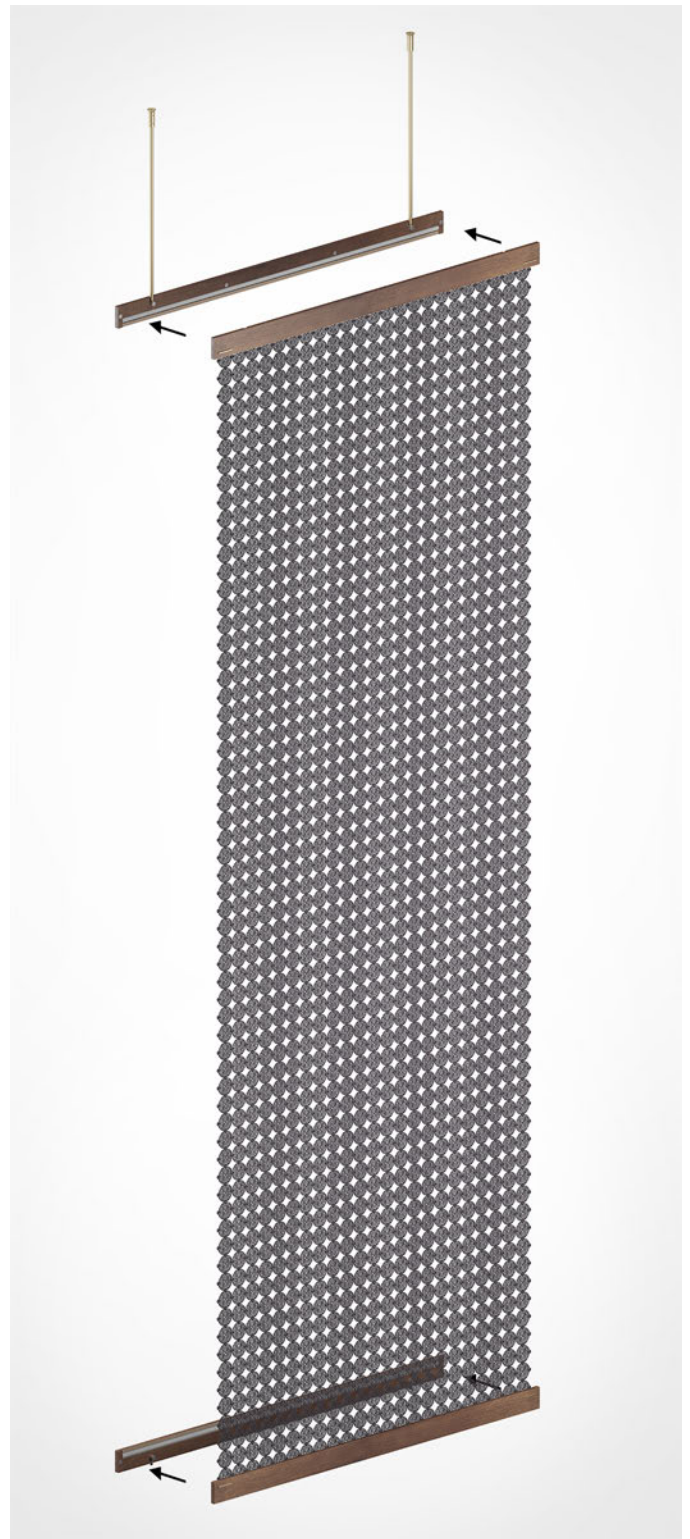




Beam Components



Magnetic Enclosure



## Additional Installation Options

### Carnegie Rail 2140

This no-sew hardware solution is recommended for use with narrow width fabrics Passage and Stack. The simple snap-in functionality is compatible with most standard drapery tracks.



### Silent Gliss Multi-Channel Track

Silent Gliss offers a wide range of hardware solutions. The multi-channel track enables fabric panels to be layered and slide. [silentgliss.com](http://silentgliss.com)



### Ripplefold Drapery Fabrication

Traditional ripplefold fabrication for drapery application shown. This fabrication method and track system is provided by most drapery workrooms/fabricators.







# Xorel

Since its creation in 1981, Carnegie's Xorel has been changing the conversation of what a sustainable and high-performing interior textile can be. Durable, lightfast, easy-to-clean, and resistant to tearing, the Cradle to Cradle Silver Certified material is available in over 300 colors and patterns, with end uses including wallcoverings, upholstery, acoustic tiles, and wrapped panels. Carnegie introduced a plant-derived version, Biobased Xorel, in 2013 which is Cradle to Cradle Gold Certified. Delivering the same superior performance as its namesake but with an even smaller carbon footprint, the material underscores Carnegie's commitment to creating uncompromising textiles that benefit people and the planet.





[carnegiefabrics.com/xorel-vue](http://carnegiefabrics.com/xorel-vue)

XORELVUE/BR