

USES

Windows
Panels
Upholstered Walls

CONTENTS

100% Trevira® CS Polyester





107 / 2107



103 / 2103



105 / 2105



207 / 2207



406 / 2406



405 / 2405



301 / 2301



102 / 2102



305 / 2305



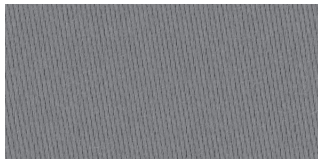
404 / 2404



202 / 2202



201 / 2201



407 / 2407



303 / 2303



203 / 2203



401 / 2201



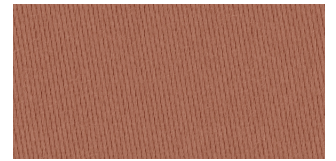
109 / 2109



409



415



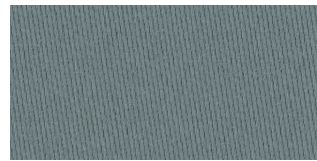
421



427



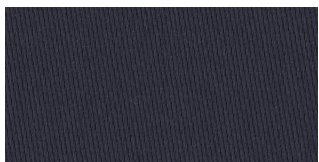
218



414



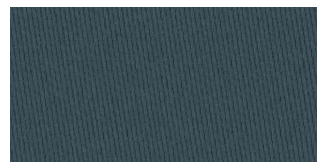
426



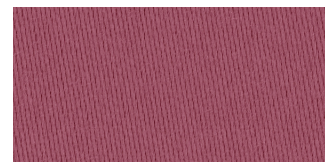
206



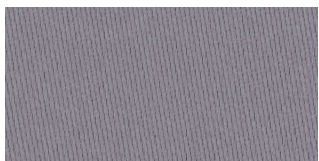
121



413



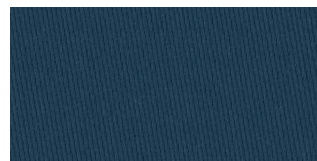
424



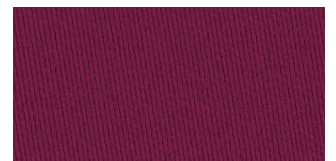
318



408



412



425

Chamois

5400 / 5402

USES

Windows, Panels, Upholstered Walls

WIDTH

5400: 59 in / 150 cm
5402: 118 in / 300 cm (Colors are numbered in the 2000 series)

CONTENTS

100% Trevira® CS Polyester

FINISH

Finish Free

FLAME RETARDANCY

ASTM E 84 Class A / Class 1
NFPA 701
IMO 2010 FTP Part 7 for Drapery as Stocked
Canadian ULC S109

SOUND ABSORPTION PERFORMANCE

NRC of 0.40 when draped flat
NRC of 0.55 when draped at 100% fullness
Test Method ISO 354

ECO INFO

LEED
Manufacturer ISO 14001 certified
SCS Indoor Advantage™ Gold

CLEANING CODES

WS - Water / Solvent

LEARN MORE