



Carnegie Space

COTERIE

PRODUCT CUT SHEET



# CARNEGIE COTERIE

Created in collaboration with Polish felt artist Anna Spakowska, Coterie provides a refreshed solution to shared spaces by bringing dimensionality, materiality, and simplicity in an easy to install hanging space division system.

The collection consists of nine woolen melange felt hues, four unique panel designs, and four embroidered panel accents, allowing designers to experiment with their own palette combinations.

When installed with Carnegie Bar or Beam, our hardware for space division, Coterie is a stunning piece of art that can elevate a wide variety of public commercial spaces without compromising performance.



# SPECIFICATIONS

**Use:** Vertical Partitions, Privacy Screens, Space Dividers

**Contents:** 90% Wool, 10% Polyester

**Hardware Options:** Carnegie Bar, Carnegie Beam

**Cleaning Codes:** X - Vacuum and Light Brushing Only

**Pricing:** [Coterie I](#)

[Coterie II](#)

[Coterie III](#)

[Coterie III Embroider](#)

**Dimensions:** 118 in Height, 47.5 in Width

**Weight:** 4.8 lbs

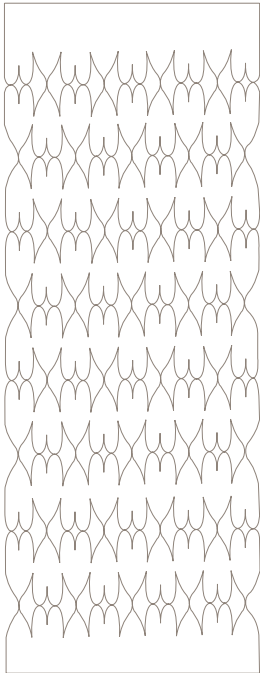
**Thickness:** 3.5 mm

**Finish:** FR Treatment

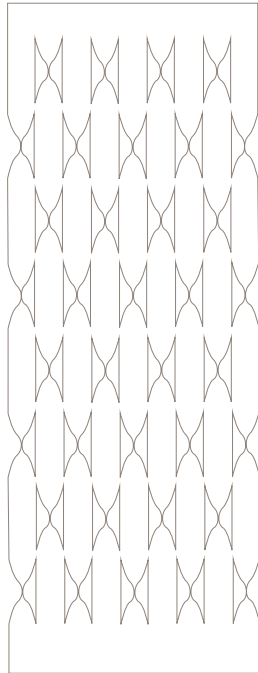
**Flame Retardancy:** NFPA 701, ASTM E84

**Notes:** Panel size may change up to +/- 5% due to variations in temperature and humidity.  
Finish-Free is available upon request at a 6 panel minimum per color.

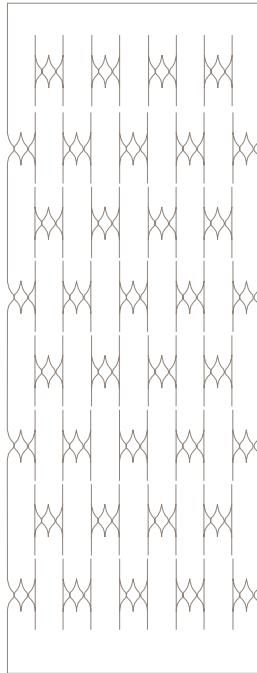
## Panel Designs



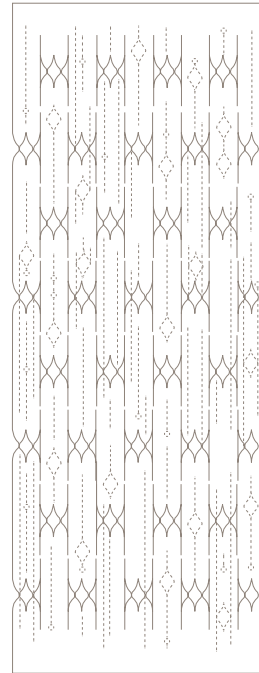
31000 Coterie I



31002 Coterie II



31004 Coterie III



31006 Coterie III Embroider



# Colors

## Coterie I



[Coterie I  
31000-10](#)

[Coterie I  
31000-11](#)

[Coterie I  
31000-12](#)

[Coterie I  
31000-13](#)

[Coterie I  
31000-14](#)

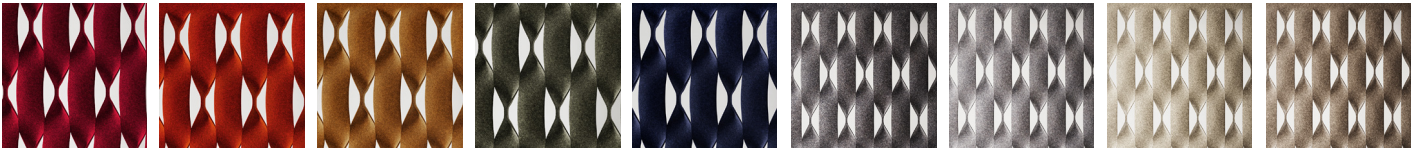
[Coterie I  
31000-15](#)

[Coterie I  
31000-16](#)

[Coterie I  
31000-17](#)

[Coterie I  
31000-18](#)

## Coterie II



[Coterie II  
31002-20](#)

[Coterie II  
31002-21](#)

[Coterie II  
31002-22](#)

[Coterie II  
31002-23](#)

[Coterie II  
31002-24](#)

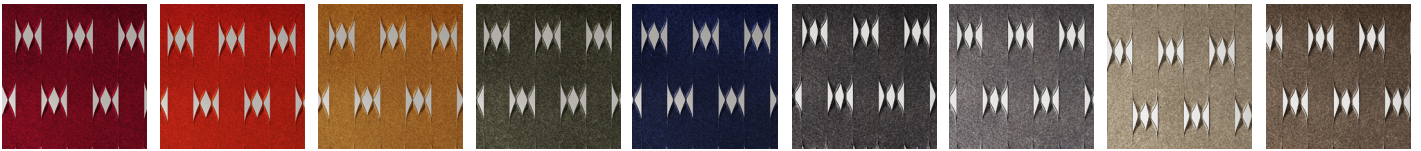
[Coterie II  
31002-25](#)

[Coterie II  
31002-26](#)

[Coterie II  
31002-27](#)

[Coterie II  
31002-28](#)

## Coterie III



[Coterie III  
31004-30](#)

[Coterie III  
31004-31](#)

[Coterie III  
31004-32](#)

[Coterie III  
31004-33](#)

[Coterie III  
31004-34](#)

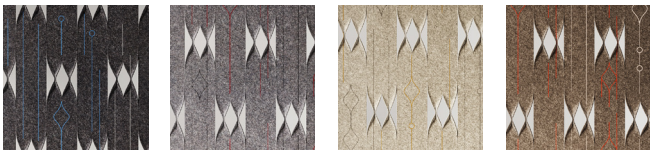
[Coterie III  
31004-35](#)

[Coterie III  
31004-36](#)

[Coterie III  
31004-37](#)

[Coterie III  
31004-38](#)

## Coterie III Embroider



[Coterie III Embroider  
31006-115](#)

[Coterie III Embroider  
31006-116](#)

[Coterie III Embroider  
31006-117](#)

[Coterie III Embroider  
31006-118](#)

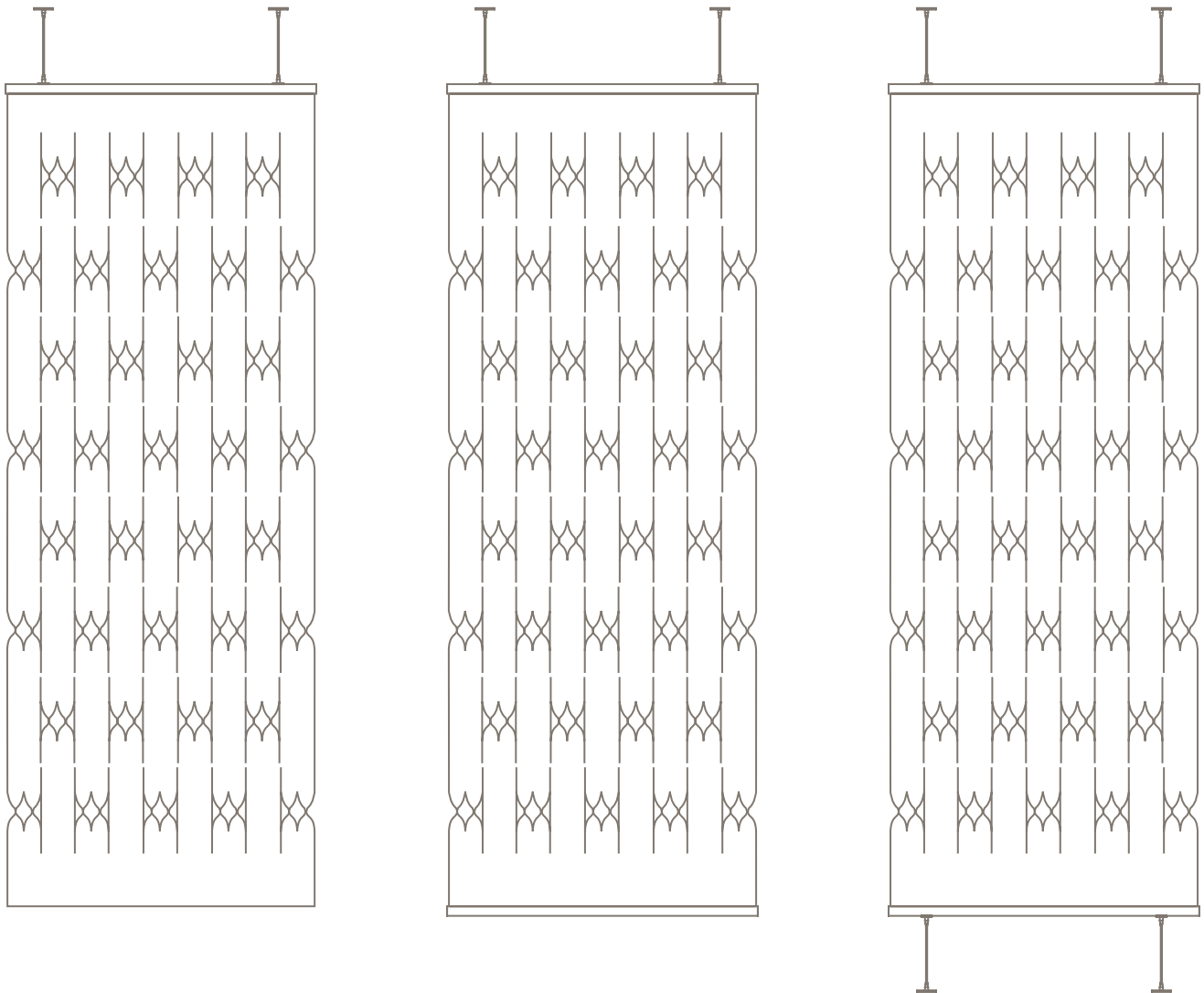


# INSTALLATION

Paired with Carnegie's hardware Bar and Beam, Coterie is a finished suspension system with easy assembly, requiring little experience. Straight out of the tube, all connection points or folds come preassembled allowing for streamlined installation.

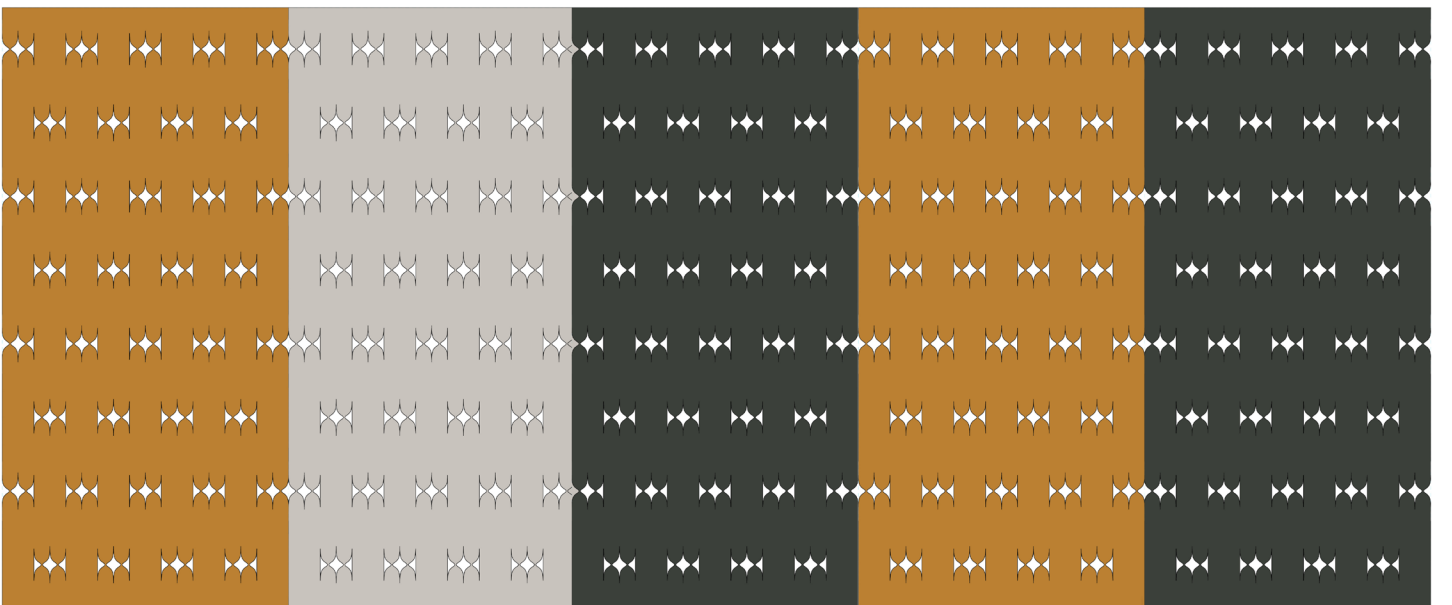
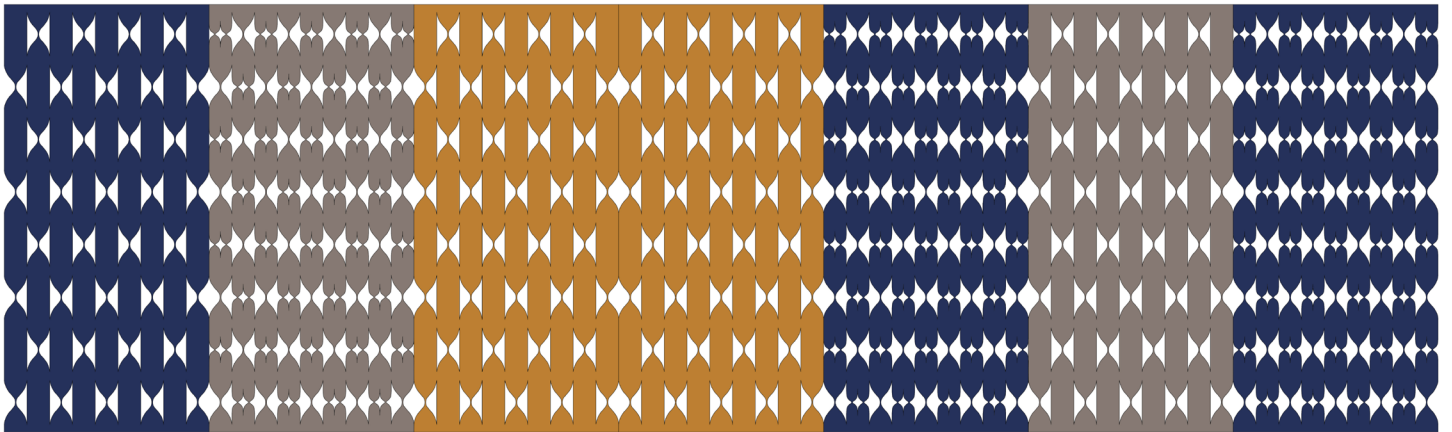
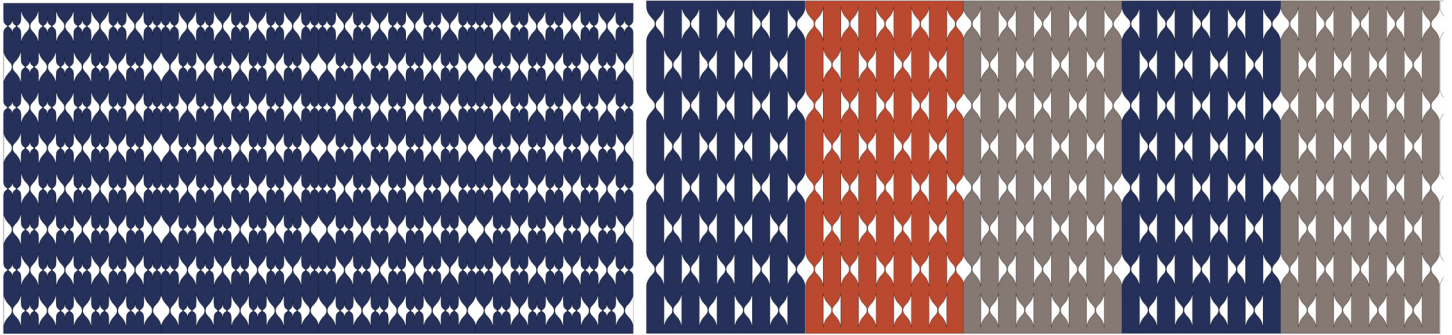
Whether using the full set of hardware components to suspend from the ceiling, mount to the floor, or even using the top hardware component on its own, Coterie offers flexible installation to work in any space.

For a step-by-step guide on how to install with Carnegie Bar or Beam, reference the [Bar Installation Instructions](#) or [Beam Installation Instructions](#).



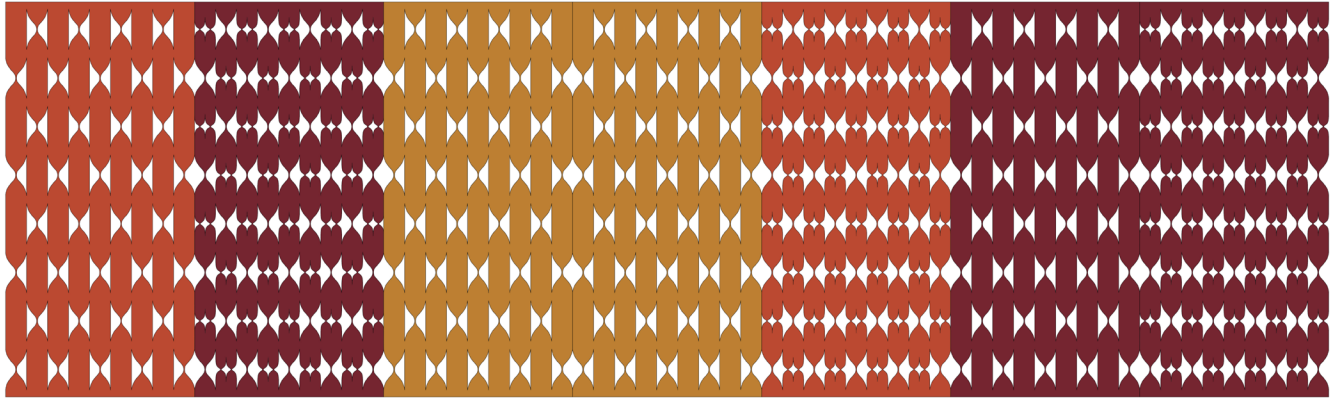
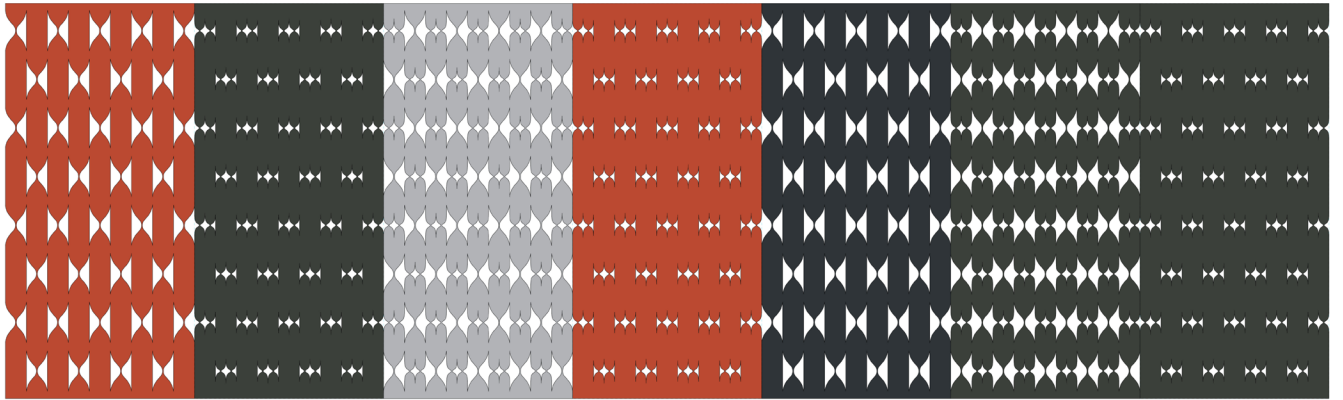
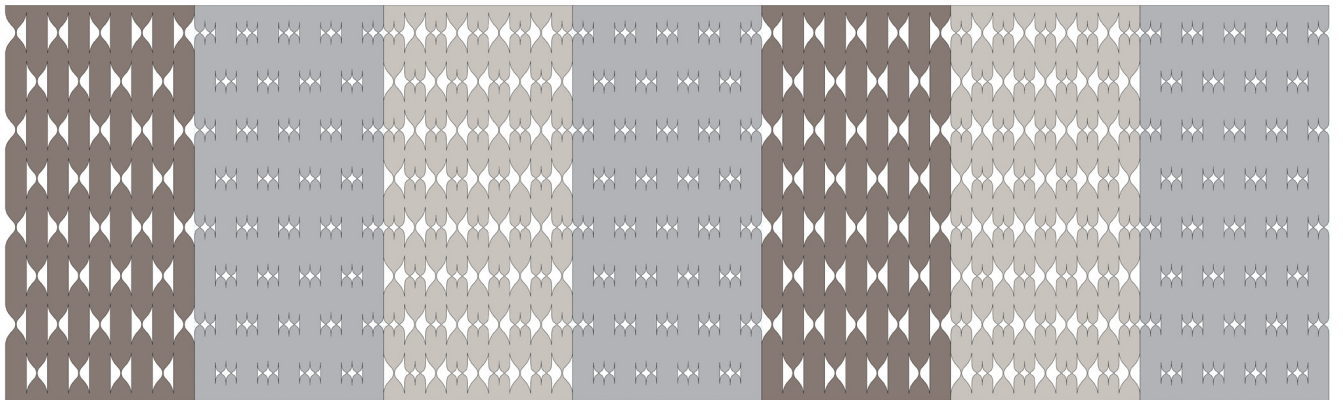
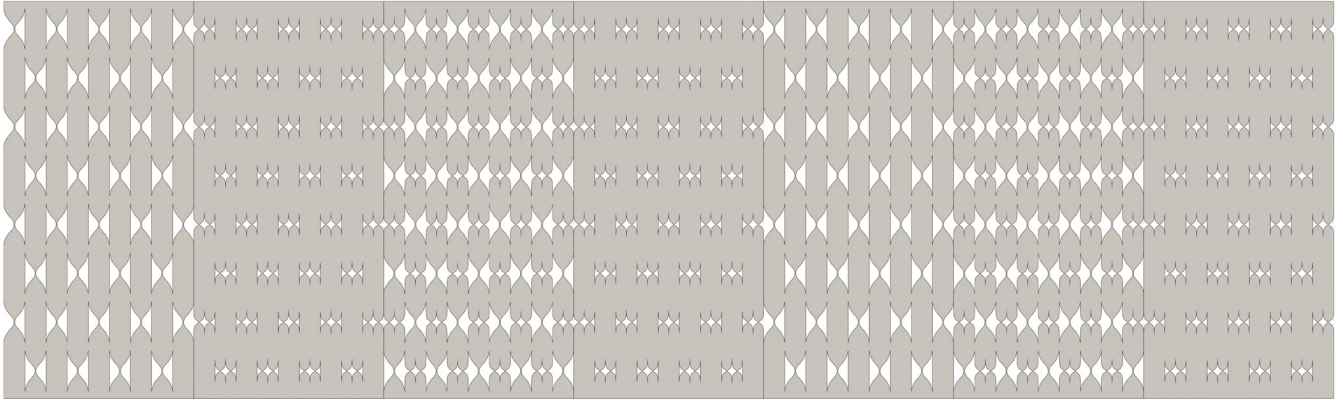
# DESIGN STUDIES

A visual feast through complexity and sophistication — the possibilities are limitless! Get a jump start by using the design studies as a starting point or create your own unique composition.



Continue onto next page to see additional design studies.





### **Order a Sample**

To order samples visit  
our website or contact  
[samples@carnegiefabrics.com](mailto:samples@carnegiefabrics.com)

### **Contact Us**

Email  
[service@carnegiefabrics.com](mailto:service@carnegiefabrics.com)

Phone  
1-800-727-6770

Find Your Rep  
[carnegiefabrics.com/us-sales](http://carnegiefabrics.com/us-sales)

Design Ally Services  
(Curated Samples)  
[carnegiefabrics.com/design-ally](http://carnegiefabrics.com/design-ally)

### **Carnegie Headquarters**

110 North Centre Avenue  
Rockville Centre, NY 11570  
T 1-516-678-6770  
F 1-516-678-6875  
[service@carnegiefabrics.com](mailto:service@carnegiefabrics.com)

Carnegie Creative Studio  
41 West 25th Street, 9th floor  
New York, NY 10010  
T 1-212-627-2060  
F 1-212-627-2129  
[service@carnegiefabrics.com](mailto:service@carnegiefabrics.com)

### **Showrooms**

New York City  
41 West 25th Street, 8th floor  
New York, NY 10010  
T 1-212-627-2060  
F 1-212-627-2129  
[nyshowroom@carnegiefabrics.com](mailto:nyshowroom@carnegiefabrics.com)

Chicago  
222 Merchandise Mart Plaza,  
Ste. 10-112  
Chicago, IL 60654  
T 1-312-464-9376  
F 1-312-464-9571  
[chicagoshowroom@carnegiefabrics.com](mailto:chicagoshowroom@carnegiefabrics.com)

Carnegie is a PVC-free company.  
For more information visit [carnegiefabrics.com](http://carnegiefabrics.com)

© 2019 Carnegie Fabrics, LLC. Printed on recycled paper.