

USES

Panels
Upholstered Walls
Upholstery
Wallcovering
Xorel Artform

CONTENTS

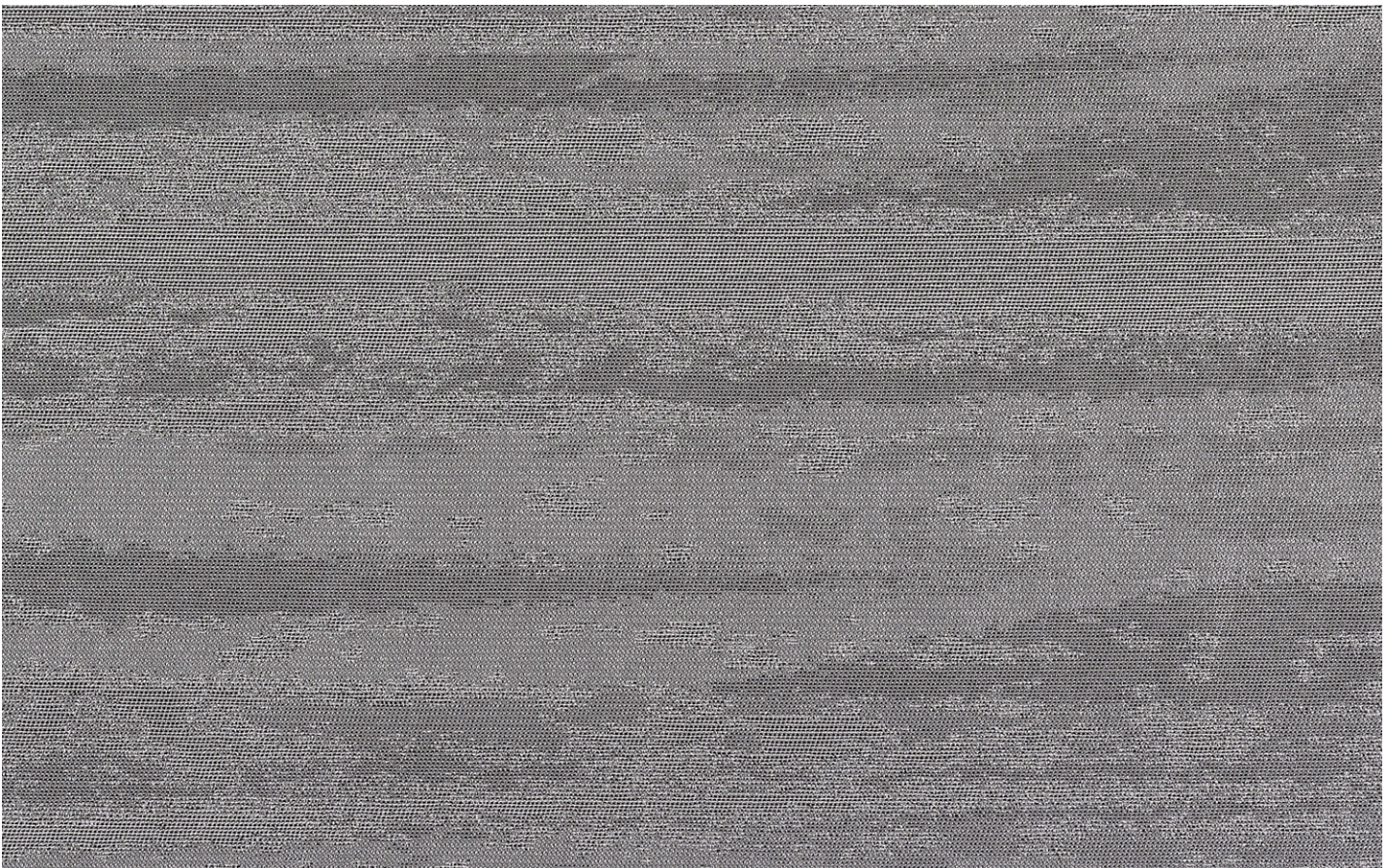
100% IFR Xorel®

Carnegie Xorel®





4



Shown on front

5



3



1



2

Limestone

6107

USES	Panels, Upholstered Walls, Upholstery, Wallcovering, Xorel Artform
BACKINGS/WIDTHS	Unbacked 56 in / 142 cm Acrylic Backed 54 in / 137 cm X-Protect Sit™ 54 in / 137 cm X-Protect Wall™ 52 in / 132 cm
CONTENTS	100% IFR Xorel®
REPEAT	45.5 in (41 15.57 cm) length, full width No match required
FLAME RETARDANCY	ASTM E84 Class A / Class 1, Fabric meets Underwriters Laboratory(UL) 1286 Flammability Requirements for Office Furnishings, FAA 25.853 (a&b), NYC 294-40 SR, NFPA 260 Class 1, California Technical Bulletin 117 - 2013, 265 Room Corner Test, Canadian ULC S102
DURABILITY	No wear 1 million double rubs*
ECO INFO	Cradle to Cradle Certified™ Silver facts™ Certified Silver LEED SCS Indoor Advantage™ Gold Free of Antimicrobials, Antimony, Bisphenol A (BPA), Chlorine, DMF, Fluorocarbons, Formaldehyde, Halogenated fire retardants, Heavy metals, Ozone-depleting chemicals, PFC, Phthalates, Plasticizers, PVC, Solvents, Stain resistant finishes No topical finishes Antimicrobial, Antibacterial, Safely Disposable, Extremely low VOCs Responsible Return Program
ACOUSTICS	NRC of 0.90 when wrapped around a 2" thick panel Test Method ASTM C 423
CLEANING CODES	WS & BC - Water / Solvent & Bleach Cleanable
NOTES	X-Protect: Proprietary Xorel backing technology which prevents stains and moisture from passing through the textile enabling the wall or seating surface to be aggressively cleaned A summary of the results of 65 independent tests on Xorel is available at carnegiefabrics.com *Results above 100,000 double rubs have not been shown to be a reliable indicator of increased fabric lifespan. ©Copyright 2021 Carnegie Fabrics

