
Lithograph Wallcovering Installation

STORAGE

Rolls of material should be stored so that a minimum weight rests on each piece.
Do not stand on end.

EXAMINATIONS

Examine goods to assure that pattern, color, quantity, and quality is as ordered. All wall-coverings must be examined for pattern, color and quality. Make sure that multiple rolls match each other. **DO NOT HANG MORE THAN THREE DROPS** without reviewing for quality and consistency.

WALL PREPARATION

Surfaces to be covered must be clean, sanded smooth, dry and structurally sound. Loose paint or other wallcovering must be removed.

Glossy surfaces should either be sanded to dull the surface or an application of Romans Professional **PRO-935(R-35)** Heavy Duty Primer should be made.

On new drywall, if future strippability is desired and no primer is specified, use a quality primer such as **PRO-977**. In situations where substrate is showing-through on lighter colors, a pigmented tinted primer can be used to give the wall a uniform color and prevent substrate transmission.

ADHESIVE

Use Heavy Duty Clay (**PRO-774** or **PRO-732**) based adhesive at full strength. Adhesive should not be thinned with water or chemical solvent.

HANGING

Before beginning hanging, examine pattern for color uniformity and any repeat in the design. Only full widths of material should be used for the most satisfactory installation.

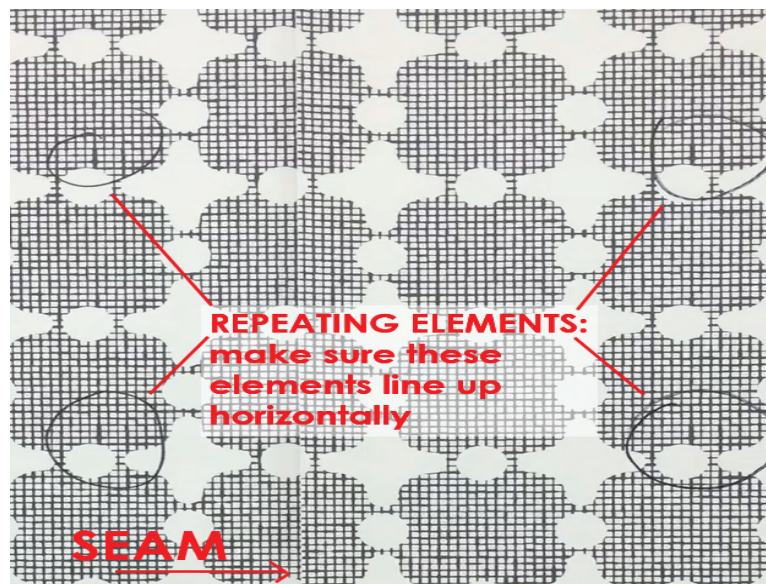
1. All material must be installed in roll numerical sequence within a shade lot, starting with the highest number first and going in decreasing order, with each strip in sequence as cut from the roll. Piecing or hanging headers with strips cut out of sequence can cause unsatisfactory shading.
2. Overlapping and double-cutting, and pre-trimming the wallcovering both have advantages in making acceptable seams. Be careful not to "score" the drywall when double-cutting. **Tip:** A roller's width of paste can be added along the seam area, of the wall, to help seams remain tight.
3. Apply a generous even coat of adhesive to the fabric side of the material using a stiff bristle brush, a roller, or a pasting machine in accordance with manufacturer's label recommendations.
4. **AFTER THREE DROPS ARE INSTALLED, INSPECT THE WALLCOVERING** to insure that the installer and designer are satisfied with the overall look.
5. The wallcovering should then be booked **15-20 minutes** prior to application to the wall.
6. Smooth the surface, working out air bubbles as you go using a stiff bristle brush or a plastic smoothing tool. **A steel broad knife should never be used to smooth the wallcovering.**
7. As each strip is installed, immediately remove excess adhesive from the wallcovering surface using a natural sponge and a soft bristle brush frequently rinsed in clean warm water. Dry with clean toweling. A professional paste cleaner should be used where adhesive has dried.
8. Vertical joints should not occur less than 6" from outside and inside corners.
9. **Do not install** wallcovering unless a temperature above 55o F is maintained in both areas of installation and storage.
10. Permanent building lights should be available for installation.

Lithograph Wallcovering Installation

HANGING

The **Lithograph** pattern was designed to provide a virtually seamless installation if the following guidelines are followed.

1. To achieve the desired look, straight hang is recommended for the installation of this pattern.
2. The material should be overlapped and double cut.
3. When measuring for trimming, add enough excess material to the wall height to allow for positioning the pattern as desired.
4. Although each "4 pronged design element" appears to be the easiest way to align and install this pattern, it is not. Trying to "match" the "4 pronged design element" will cause the seam to be out of alignment.
5. Alignment of the "woven" design in the background is the correct installation method. There are 4 darker colored sections of the woven background that should be aligned.



If you have any questions concerning the installation of this fabric, please contact our local sales representative or our Rockville Centre, NY office at (516) 678-6770 before proceeding. **We are not responsible for the appearance and performance of wallcovering not applied according to these instructions.**