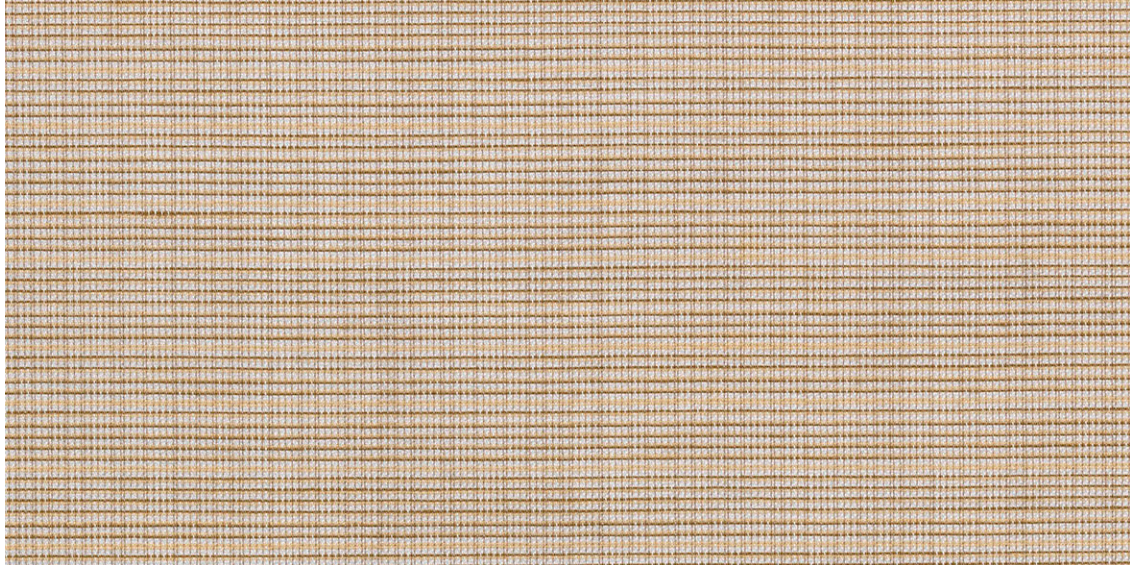


Muteacoustic 4788

Shiftacoustic 4786

Ultracoustic 4784



4786 - 11



4784 - 2

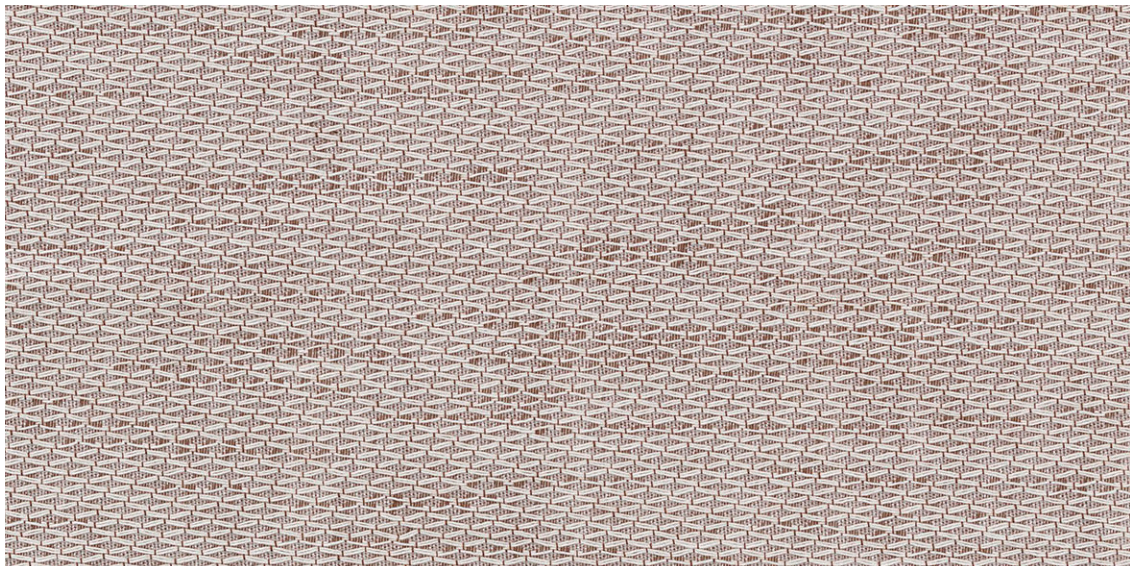
USES

Windows

CONTENTS

100% Trevira® CS Polyester

Carnegie

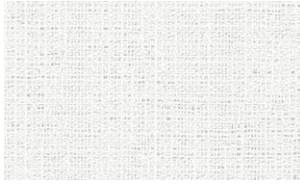


4788 - 22

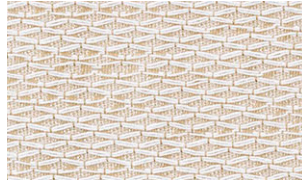
Muteacoustic 4788

Shifacoustic 4786

Ultracoustic 4784



4784 - 1



4788 - 21



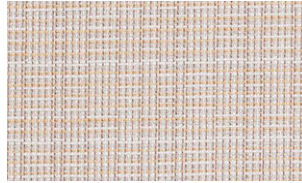
4786 - 11



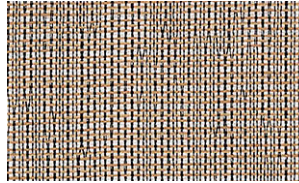
4784 - 4



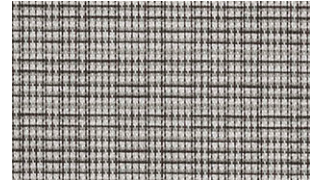
4788 - 20



4786 - 10



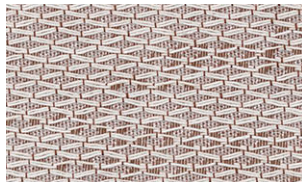
4784 - 3



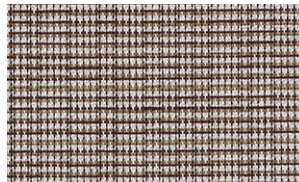
4786 - 13



4784 - 2



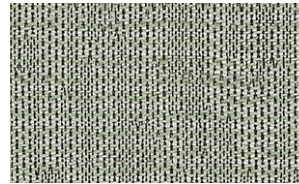
4788 - 22



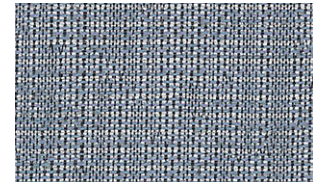
4786 - 12



4788 - 23



4784 - 6



4784 - 5

USES

Windows

WIDTH

118 in / 300 cm

CONTENTS

100% Trevira® CS Polyester

FLAME RETARDANCY

NFPA 701

ECO INFO

Manufacturer ISO 14001 certified

SOUND ABSORPTION PERFORMANCE

Innovative weave and yarn technology enabling sheer fabrics to absorb sound

Muteacoustic NRC of 0.25 when draped flat or 0.45 when draped at 100% fullness

Shifacoustic NRC of 0.15 when draped flat or 0.35 when draped at 100% fullness

Ultracoustic NRC of 0.30 when draped flat or 0.45 when draped at 100% fullness

Test Method ISO 354

CLEANING CODES

WS - Water / Solvent

NOTES

Muteacoustic: Random striations are an inherent quality of this fabric.

