



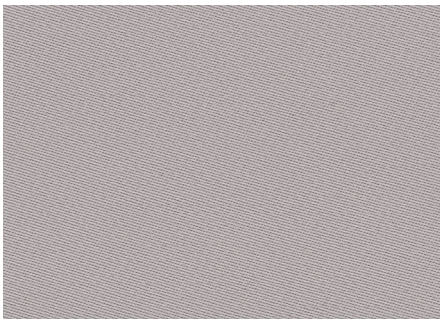
**USES**

Windows  
Panels  
Upholstered Walls

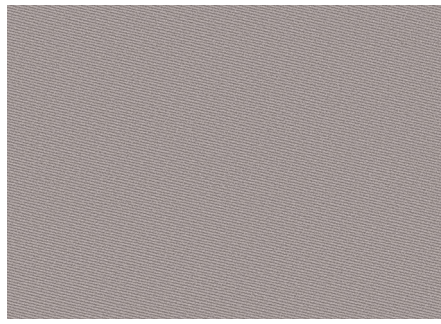
**CONTENTS**

100% Trevira® CS Polyester

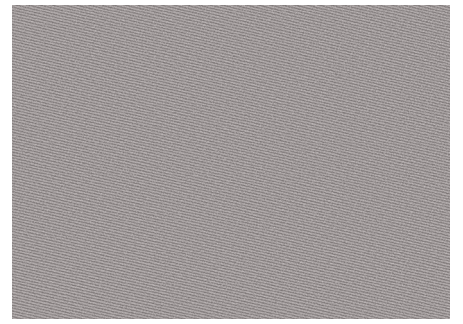




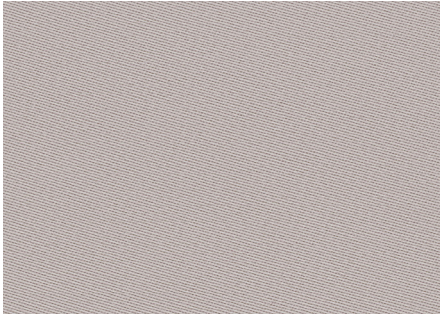
321



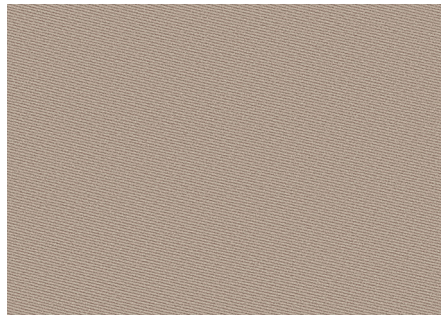
354



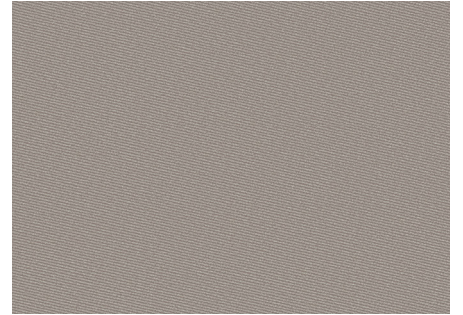
355



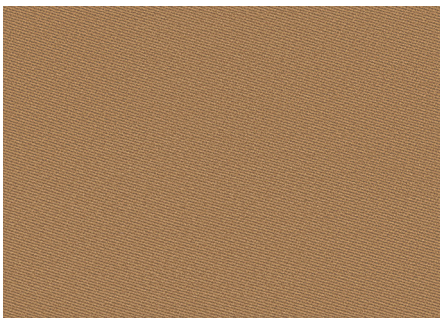
303



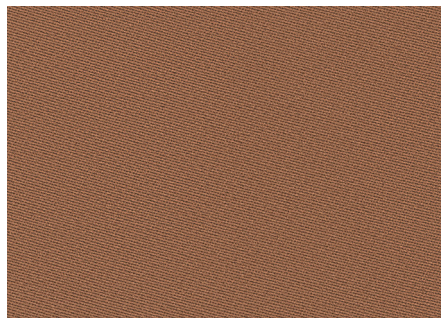
353



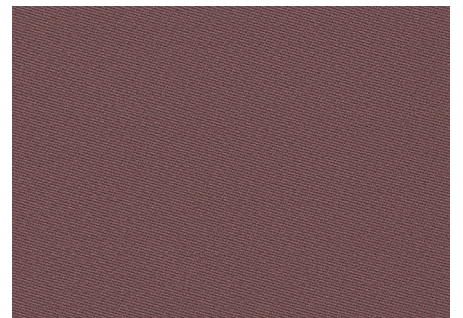
352



365



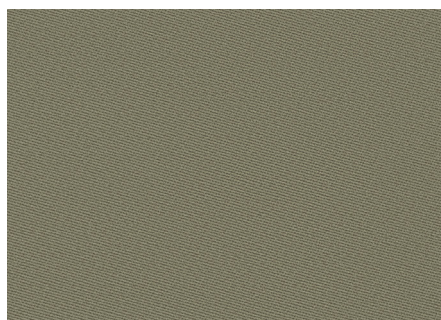
360



361



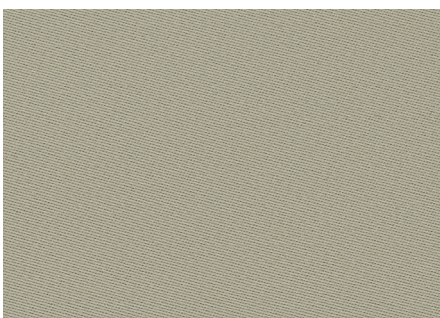
366



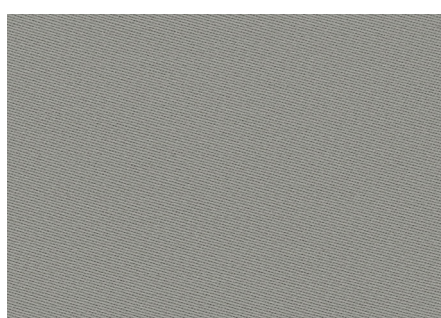
368



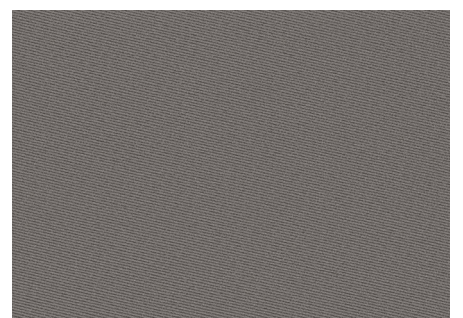
369



367

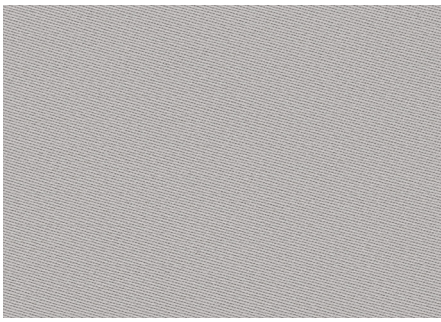


371

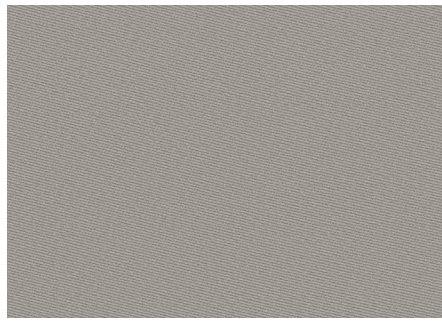


351

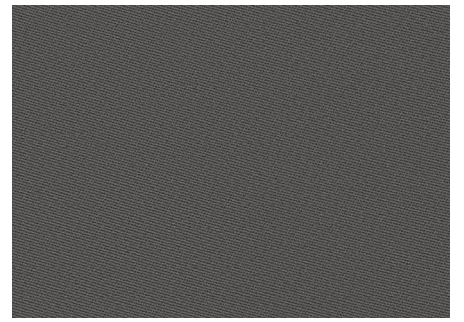




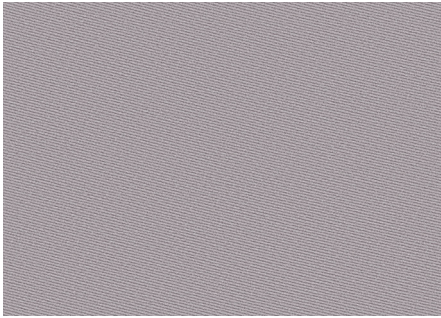
304



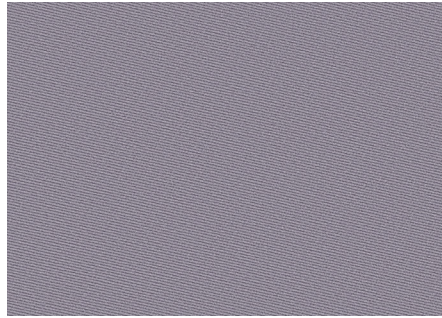
322



370



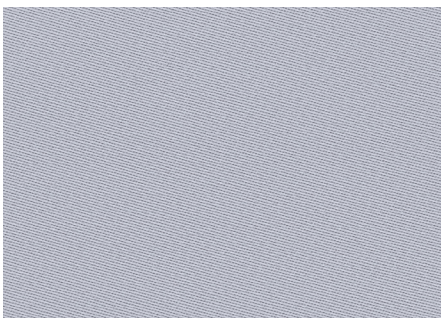
364



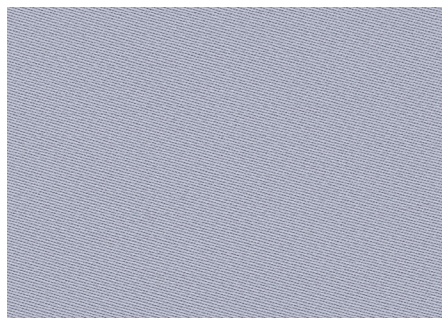
362



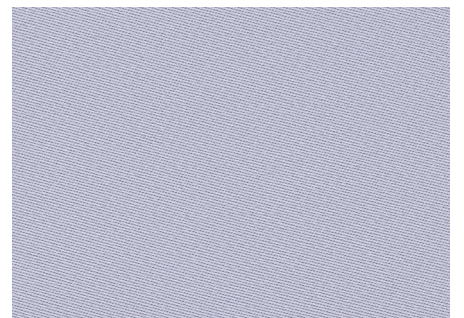
363



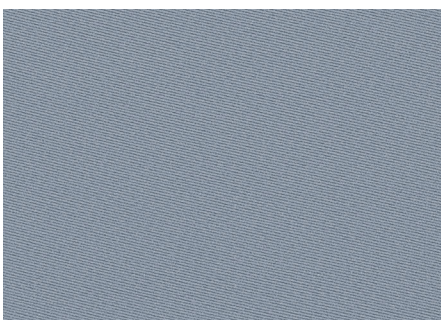
305



307



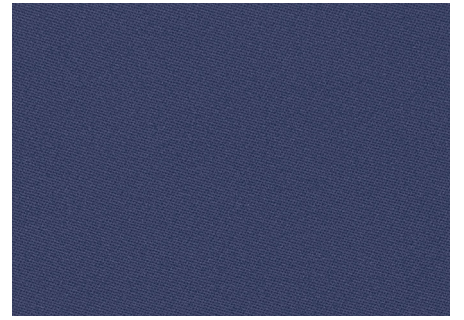
306



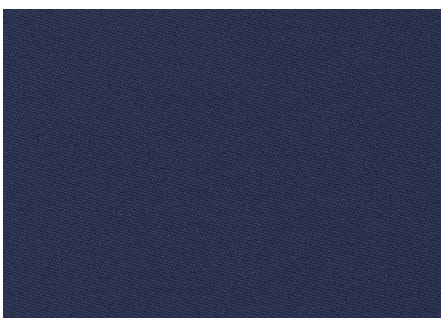
359



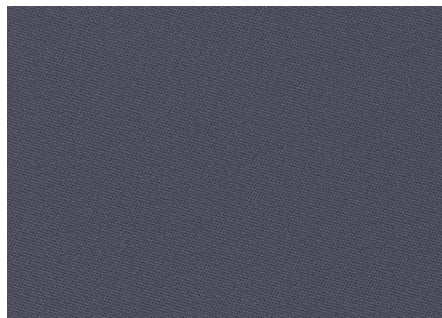
358



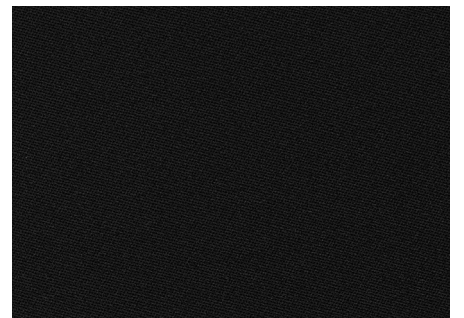
357



310



356



309

## Phantom Plus

100795

---

**USES** Windows, Panels, Upholstered Walls

---

**WIDTH** 122 in/ 310 cm

---

**CONTENTS** 100% Trevira® CS Polyester

---

**FINISH** Finish Free

---

**FLAME RETARDANCY** NFPA 701  
Canadian ULC S109  
ASTM E84 Class A / Class 1

---

**ECO INFO** Manufacturer ISO 14001 certified

---

**CLEANING CODES** WS - Water / Solvent

