

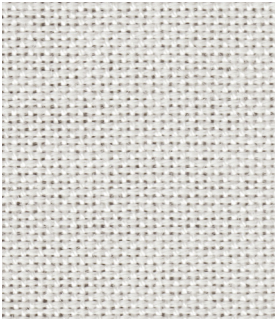


USES

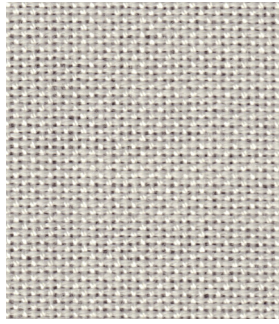
Windows
Panels
Upholstered Walls

CONTENTS

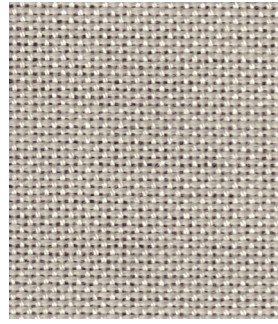
100% Trevira® CS Polyester



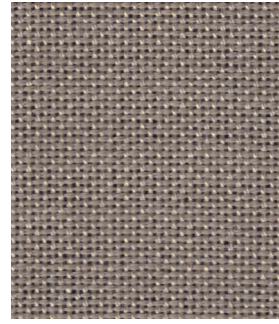
263



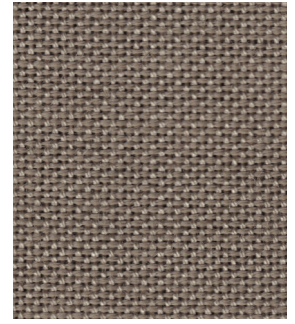
264



265



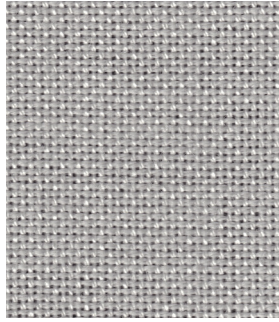
266



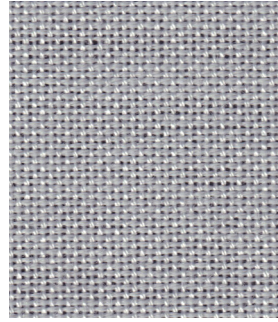
267



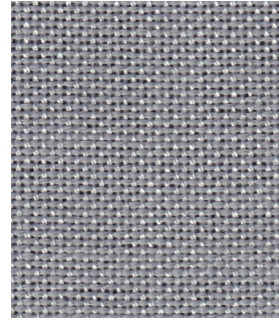
262



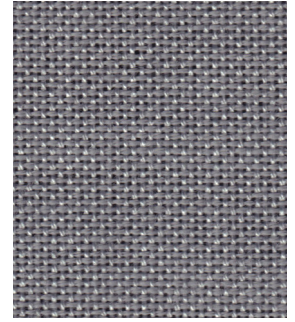
261



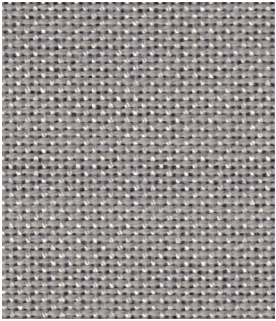
260



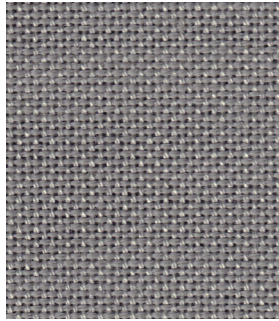
259



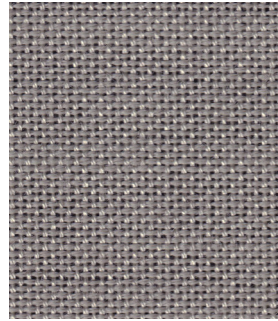
258



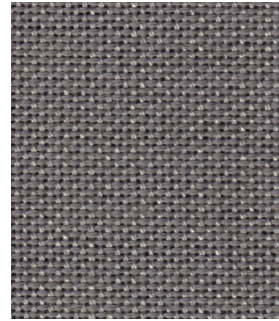
254



253



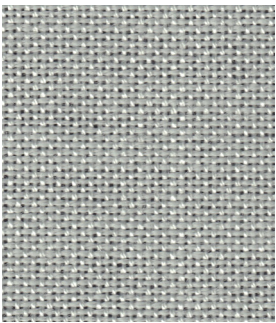
255



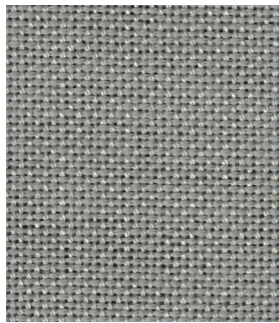
252



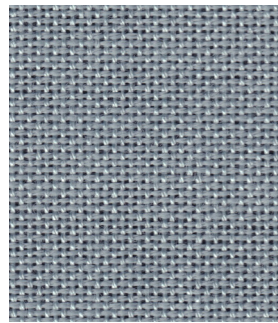
257



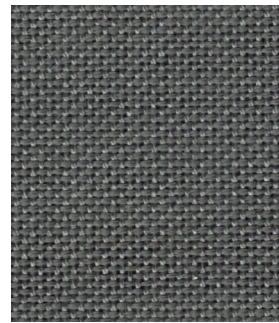
282



283



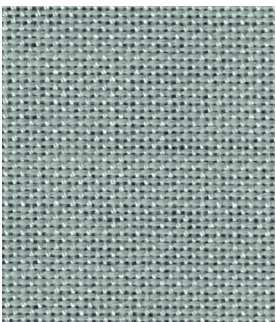
285



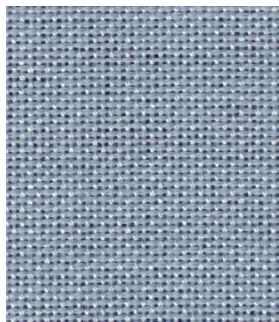
281



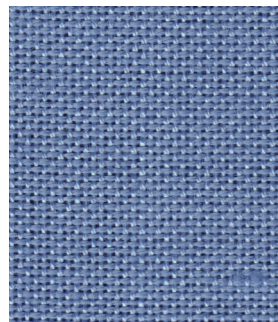
256



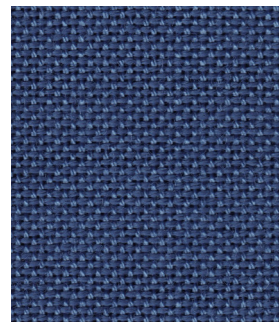
284



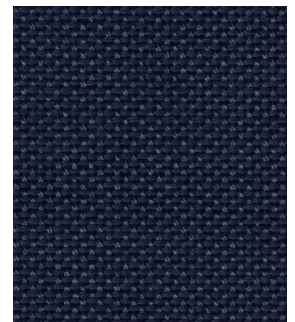
286



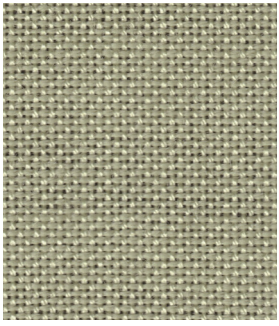
287



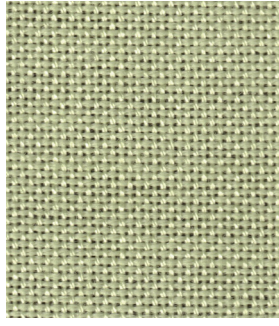
288



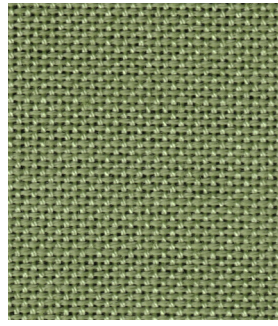
289



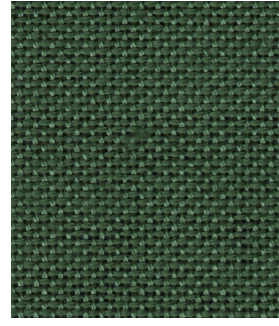
276



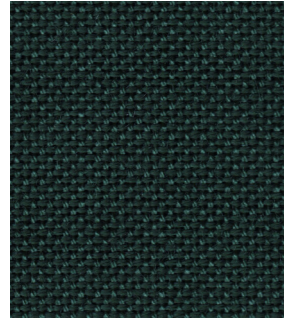
277



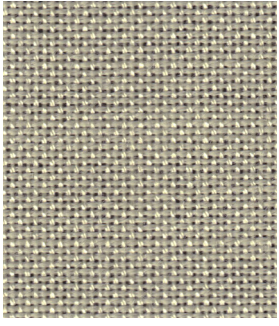
278



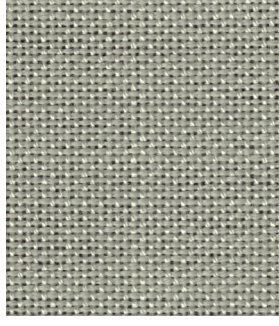
279



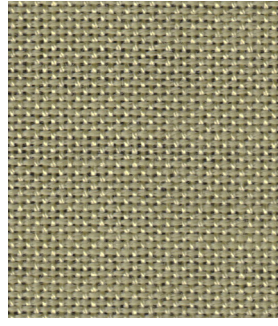
280



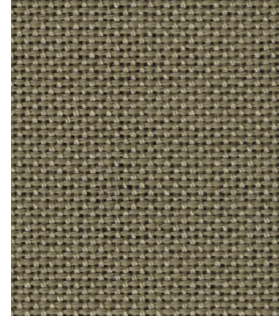
271



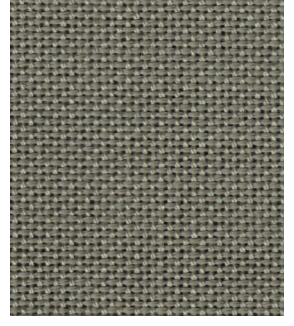
275



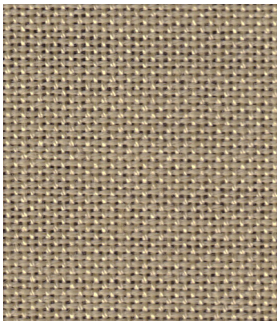
272



273



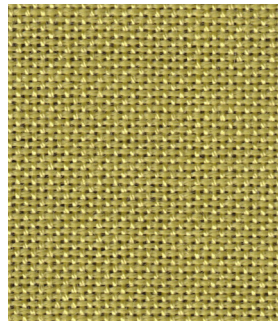
274



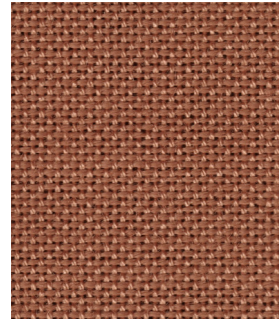
268



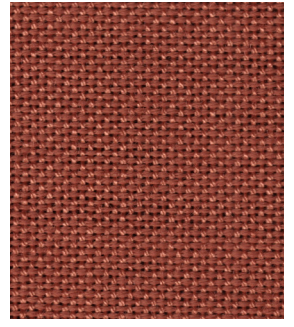
269



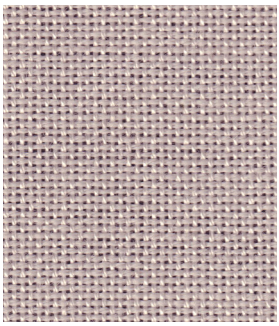
270



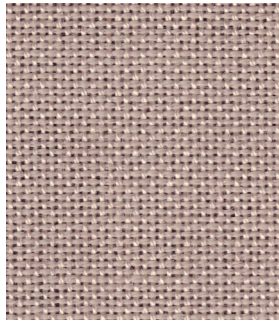
293



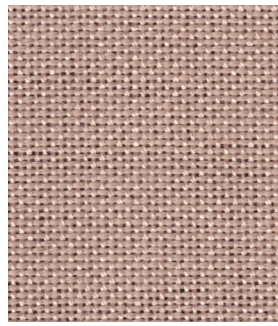
292



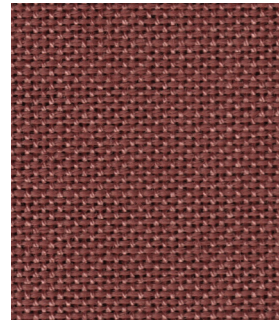
296



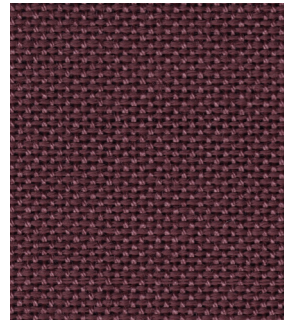
295



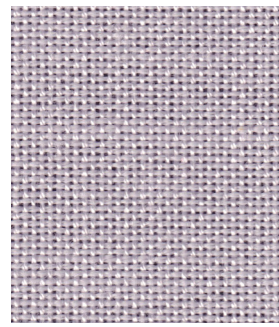
294



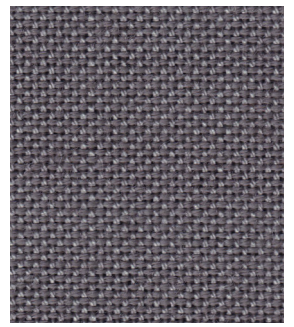
291



290



297



251

Solio

101920

USES Windows, Panels, Upholstered Walls

WIDTH 118 in / 300 cm

CONTENTS 100% Trevira® CS Polyester

FLAME RETARDANCY NFPA 701
Canadian ULC S109
ASTM E84 Class A / Class 1

ECO INFO Manufacturer ISO 14001 certified

CLEANING CODES WS - Water / Solvent

NOTES Random slubs are an inherent quality of this fabric.

