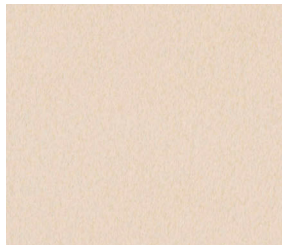
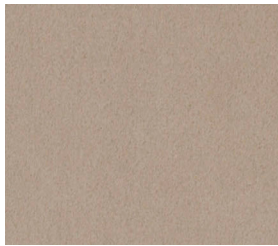




5



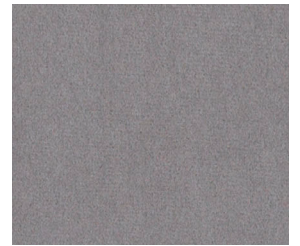
1



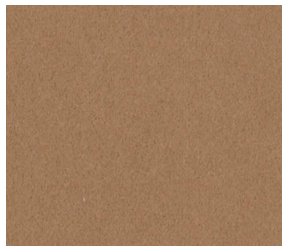
2



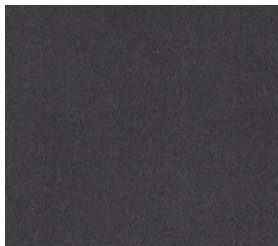
3



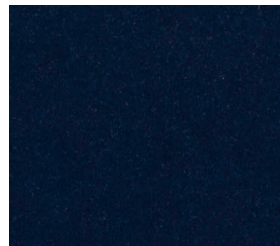
4



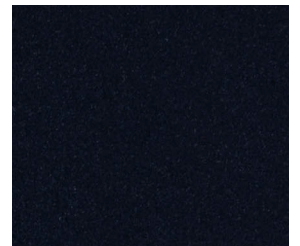
7



6



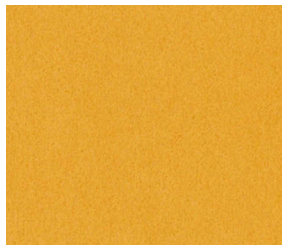
16



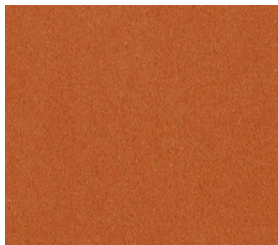
15

USES

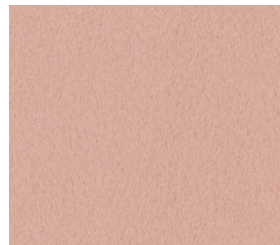
Upholstery
Panels
Upholstered Walls



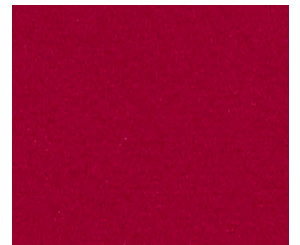
9



10



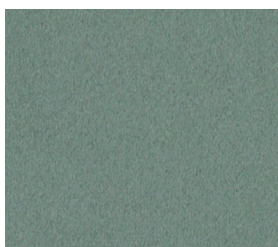
8



11

CONTENTS

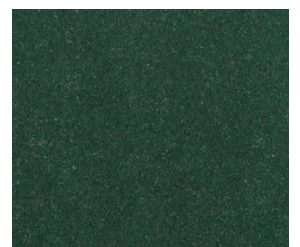
Face: 100% Polyester
Back: 100% Polyester



12



13



14

Sonata

6860

USES Upholstery, Panels, Upholstered Walls

WIDTH 55 in / 140 cm

CONTENTS Face: 100% Polyester
Back: 100% Polyester

FINISH Finish Free

FLAME RETARDANCY California Technical Bulletin 117 - 2013
NFPA 260 Class 1
ASTM E84 Class A / Class 1

DURABILITY No wear 100,000 double rubs

ACOUSTICS NRC of 1.05 when wrapped around a 2" thick panel
Test Method ASTM C 423

ECO INFO California Proposition 65 compliant

CLEANING CODES WS - Water / Solvent

