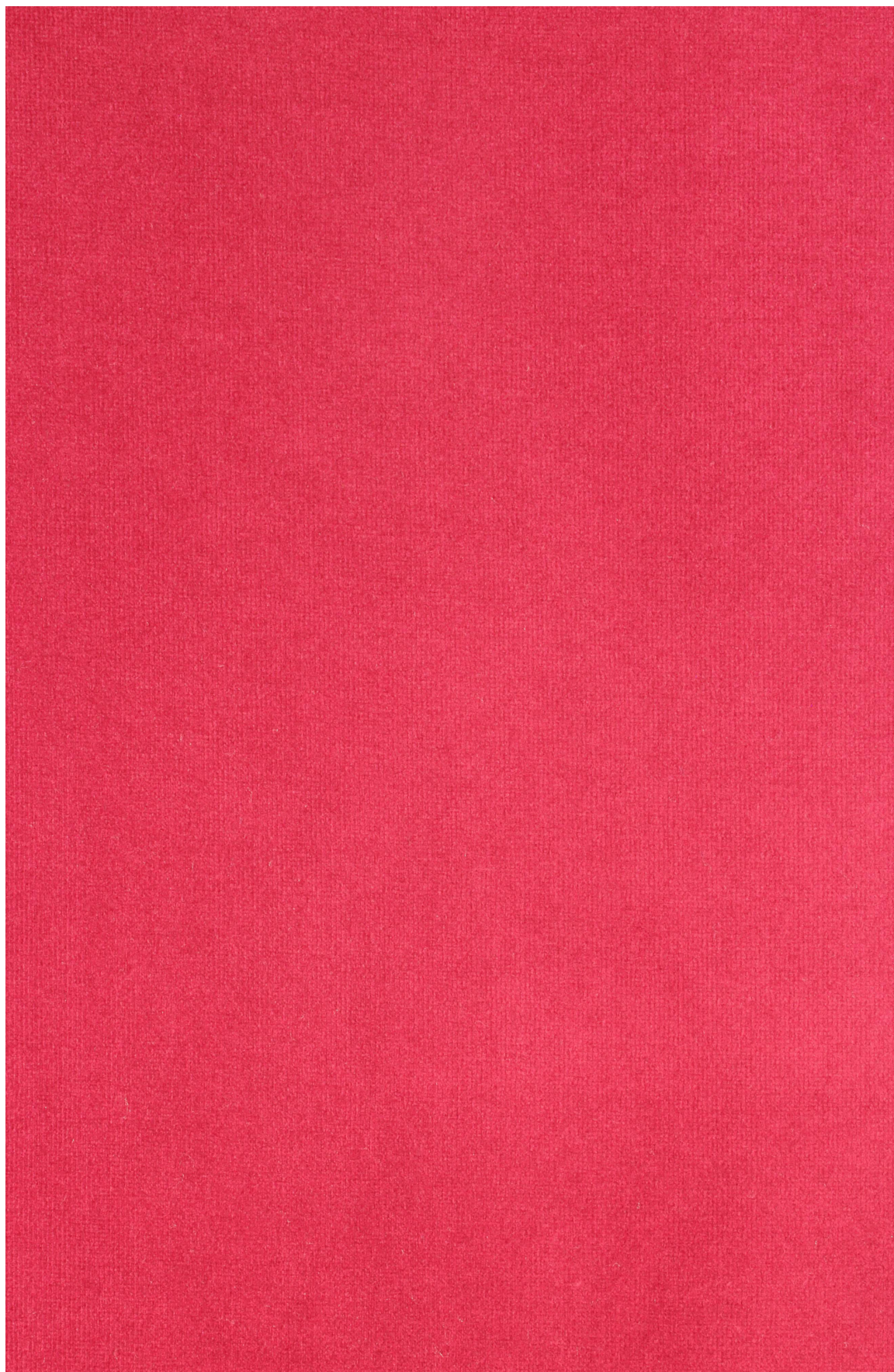


**USES**

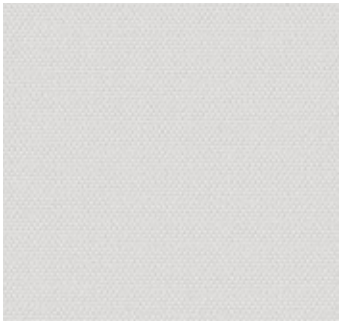
Windows  
Museum Display Cases  
Panels  
Upholstered Walls

**CONTENTS**

100% Trevira® CS Polyester

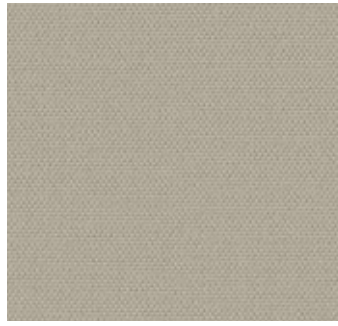






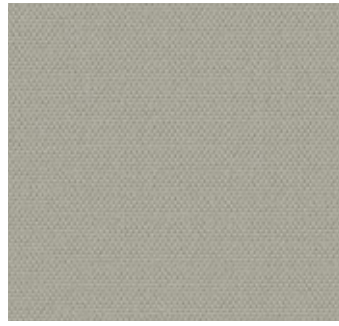
3115 - 118"

115 - 59"

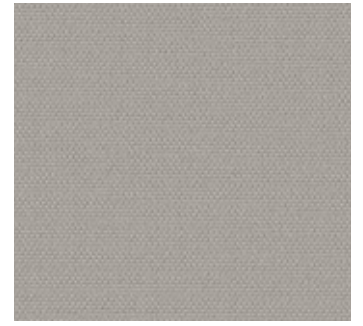


3101 - 118"

101 - 59"

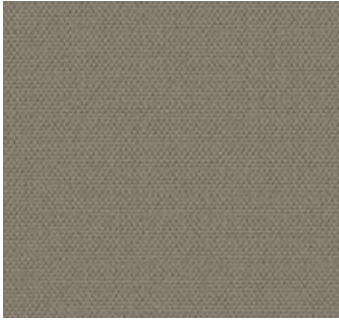


154



3203 - 118"

203 - 59"



3155 - 118"

155 - 59"



304



204



3201 - 118"

201 - 59"

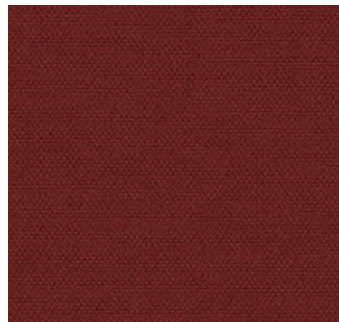


3202 - 118"

202 - 59"



167



3315 - 118"

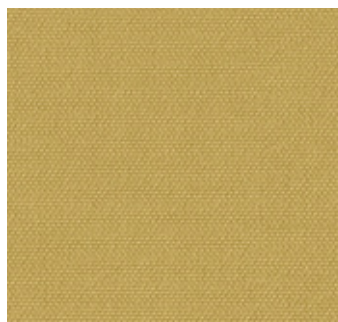
315 - 59"



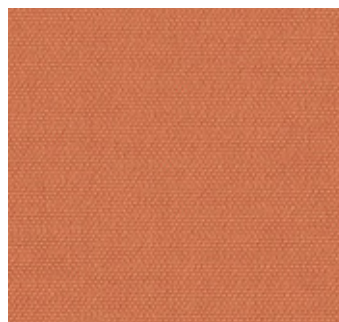
314



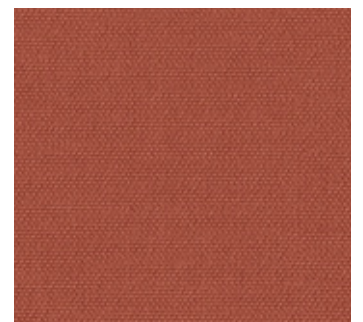
305



318



317

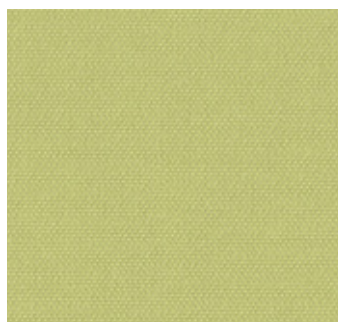


3316 - 118"

316 - 59"



210



211

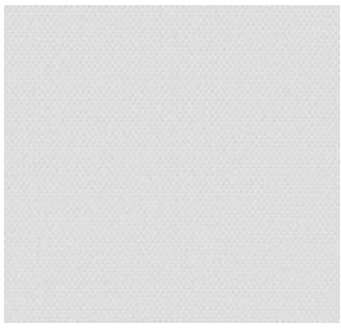


319



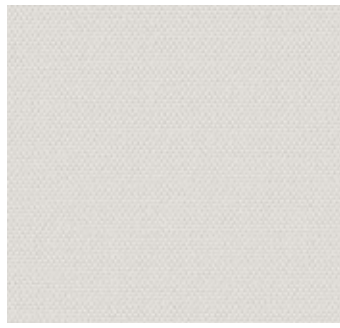
212





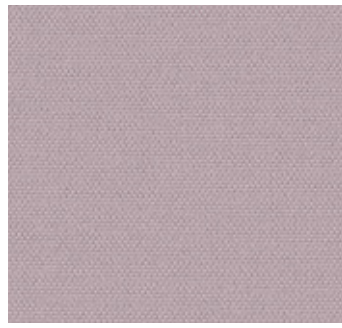
3209 - 118"

209 - 59"

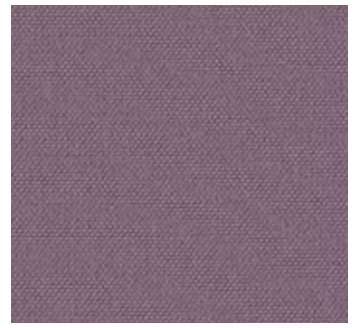


3303 - 118"

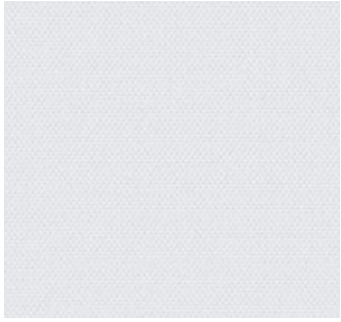
303 - 59"



312

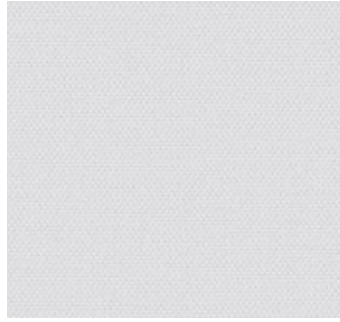


313



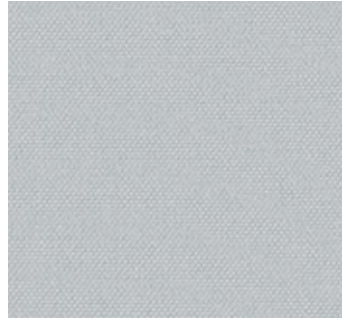
3113 - 118"

113 - 59"

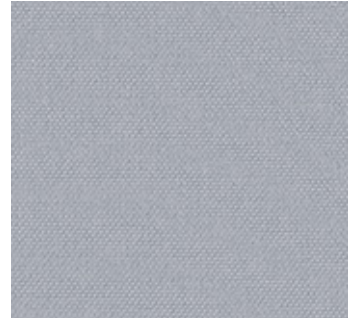


3114 - 118"

114 - 59"



302



3207 - 118"

207 - 59"



311



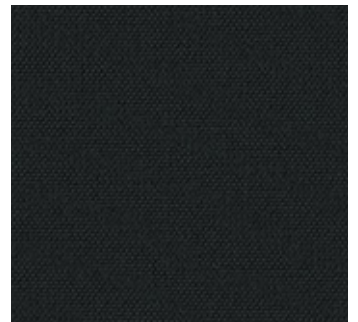
3301 - 118"

301 - 59"



3117 - 118"

117 - 59"



3118 - 118"

118 - 59"



3218 - 118"

218 - 59"



3310 - 118"

310 - 59"



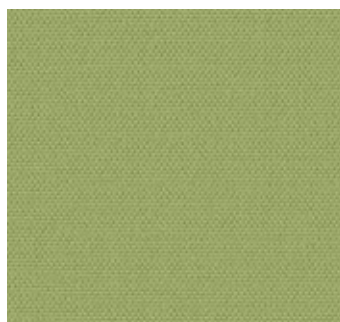
216



309



307



3306 - 118"

306 - 59"



3213 - 118"

213 - 59"



308

## Umbria IV

4200

---

<b>USES</b>	Windows, Museum Display Cases, Panels, Upholstered Walls
<b>WIDTH</b>	59 in / 150 cm 118 in / 300 cm (Pattern ID 4203 with SKUs in the 3000 series)
<b>CONTENTS</b>	100% Trevira® CS Polyester
<b>FINISH</b>	Finish Free
<b>FLAME RETARDANCY</b>	NFPA 701 Canadian ULC S109 ASTM E84 Class A / Class 1
<b>ECO INFO</b>	Manufacturer ISO 14001 certified
<b>CLEANING CODES</b>	WS - Water / Solvent

---

