

# Carnegie Rail



# Installation Guide

## Before Getting Started

### Check Your Shipment

Make sure you received everything you ordered. Please let us know if you have any questions or concerns by calling 1-800-727-6770 or visiting [carnegiefabrics.com](http://carnegiefabrics.com)

Rail fixture is designed for fabric suspension. The simple snap-in functionality is compatible with most standard drapery tracks.

The maximum fabric width is 23.5" and 1/8" thickness.

## Installation Steps

### Step 1

Establish desired fabric measurement; consider existing standard drapery track in which the Rail fixture snaps into. Consider pattern repeats. Cut the fabric with a clean, straight cut. One complete set of Rail is required for one fabric panel (1 set consists of an upper clip bar and a bottom end bar).

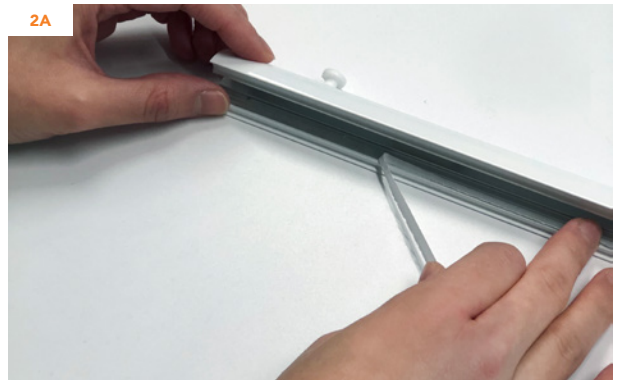
### Step 2 - Installation of Rail

A. Remove the end caps on each end of the top and bottom Rail, snap open and remove the white protection paper from the self-adhesive tape.

B. Insert the upper top of the fabric into the upper clip bar (with glider) and shut it, replace the end caps.

C. Insert the bottom of the fabric into the bottom bar and shut it, replace the white end caps.

D. Install top Rail with gliders into existing drapery track channel.



## Contact Us

Email

[service@carnegiefabrics.com](mailto:service@carnegiefabrics.com)

Phone

1-800-727-6770

All Xorel fabrics are C2C Certified.  
Visit [xorelartform.com](http://xorelartform.com) for more information.

© 2018 Carnegie Fabrics, Inc. Printed on recycled paper.  
Xorel is a registered trademark of Carnegie Fabrics Inc.  
Xorel registered trademark and license to distribute is granted by permission of Carnegie Fabrics Inc. USA